

Exam Name:	Oracle EBS R12: E-Business Essentials		
Exam Type:	Oracle		
Exam Code:	1Z0-204	Total Questions:	199

Question: 1

ABC Corp. has a requirement to share business documents from its Oracle E-Business Suite Release12 (EBS) instance with external business-to-business (B2B) exchange partners. Select the best method that you would recommend to meet this requirement.

- A. Build a workflow process and integrate it with external B2B exchange.
- B. Use notification mailer to share the documents with external B2B exchange.
- C. Use Oracle Applications Framework to integrate with external B2B exchange.
- D. Use the Advanced Workflow Mailer functionality in Oracle E-Business Suite Release 12.
- E. Build a workflow process and use Business Event System to integrate it with an external B2B exchange partner.

Answer: E

Question: 2

In Oracle E-Business Suite Release 12, Multiple Language Support (MLS) refers to the ability to support multiple languages in the same Oracle Application instance. Which three statements concerning MLS are true? (Choose three.)

- A. Oracle E-Business Suite Release 12 is available in multiple languages.
- B. Oracle E-Business Suite Release 12 translates all data entered by the user.
- C. UTF8 is the recommended character set for installations that support multiple languages.
- D. The character set you choose during installation determines which languages the instance can support.
- E. The extended multilingual support present in the Oracle E-Business Suite Release 12 data model can increase database storage requirements.

Answer: C, D, E

Question: 3

Identify three features of shared entities in Oracle E-Business Suite Release 12. (Choose three.)

- A. Enable one-time definition of objects
- B. Are referenced by several Oracle Application modules
- C. Are defined in each Oracle Application module separately
- D. Are owned by a single Oracle Application module for table purposes only
- E. Are owned by a single Oracle Application module to designate the primary user or decision maker

Answer: A, B, D

Question: 4

You can enter and view dates in any valid format in Oracle E-Business Suite Release 12. You can also enter and view numbers with either the period (full stop) character or comma as the decimal separator. Regardless of the various formats that can be used to enter dates and numbers, the actual values are stored in the database in the _____.

- A. UTF8 format
- B. ASCII format
- C. US7ASCII character set
- D. Standard number format
- E. Uniform canonical format

Answer: E

Exam Name:	Oracle EBS R12: E-Business Essentials		
Exam Type:	Oracle		
Exam Code:	1Z0-204	Total Questions:	199

Question: 5

Which Oracle resource would you use to log, manage, and resolve product-related issues that you encounter in Oracle E-Business Suite Release 12?

- A. AppsNet
- B. MetaLink
- C. AppsWorld
- D. Bug Database
- E. Oracle Technology Network (OTN)

Answer: B

Question: 6

ABC Corp. wants to track and analyze call volumes in its enterprise call centers. Which Daily Business Intelligence product can help achieve this objective?

- A. Sales Intelligence
- B. Quoting Intelligence
- C. Interaction Center Intelligence
- D. Service Contracts Intelligence

Answer: C

Question: 7

Identify three features of Key Flexfields. (Choose three.)

- A. Key Flexfields are used as identifiers for entities.
- B. The Key Flexfield structure comprises Segments.
- C. A Key Flexfield structure consists of multiple code combinations.
- D. Key Flexfields appear as a single-space field enclosed in brackets.
- E. Each segment of a Key Flexfield usually contains meaningful information.

Answer: A, B, E

Question: 8

Select the three options available when creating the Security profile for Multi-Org Access Control. (Choose three.)

- A. View all Organizations
- B. Secure by Business Groups
- C. Secure by Inventory Organizations
- D. Secure by Operating Unit and Inventory Organization
- E. Secure Organizations by Organization list and/or hierarchy

Answer: A, D, E

Question: 9

Select four required attributes when defining a Ledger in Oracle E-Business Suite Release 12. (Choose four.)

- A. Calendar
- B. Currency
- C. Legal Entity
- D. Business Group
- E. Chart of Accounts

Exam Name:	Oracle EBS R12: E-Business Essentials		
Exam Type:	Oracle		
Exam Code:	1Z0-204	Total Questions:	199

F. Accounting Convention

Answer: A, B, E, F

Question: 10

A table has 15 Attribute columns to capture additional information. The attributes 1-12 are set up in the Descriptive Flexfield as Global Segments. How many attributes can be set up under any new context?

- A. 1
- B. 3
- C. 15
- D. 12
- E. 11

Answer: B

Question: 11

Company X has three Operating Units: A, B, and C. Each Operating Unit has the MO:Security Access profile option called ABC Security assigned. Operating Unit A has both the MO: Operating Unit profile option and the MO: Default Operating Unit profile option assigned to it. Which statement is true?

- A. Paul can create transactions for the A, B, and C Operating Units.
- B. All transactions created by Paul are automatically assigned to the Operating Unit A.
- C. Paul can report on data across A, B, and C Operating Units, but enter transactions only against A.
- D. The profile option did not include Operating Unit B and Operating Unit C due to an error by the system administrator.
- E. The Payables responsibility is linked to the Operating Unit A by the MO: Operating Unit profile option and can create transactions for that Operating Unit alone.

Answer: A

Question: 12

A global company uses Oracle E-Business Suite Release 12 for its operations in the U.S. and Canada. The company is now adding Mexico to the Oracle E-Business Suite Release 12 Applications. As a system administrator, you need to set the MO: Operating Unit profile option for Mexico. Customer is not using Multi-Org Access Control. You set the MO: Operating Unit profile option at the _____ level.

- A. Site
- B. User
- C. Application
- D. Responsibility

Answer: D

Question: 13

Identify the minimum prerequisites that should be met for deleting an Oracle Alert.

- A. Alert has no history and no enabled action sets.
- B. Alert has no history and no outstanding responses.
- C. Alert has no enabled action sets and no outstanding responses.
- D. Alert has no history, no enabled action sets, and no outstanding responses.

Exam Name:	Oracle EBS R12: E-Business Essentials		
Exam Type:	Oracle		
Exam Code:	1Z0-204	Total Questions:	199

Answer: D

Question: 14

The APPL_TOP directory in Oracle E-Business Suite Release 12 contains _____.

- A. Redoes log files
- B. Database files
- C. Data tablespaces
- D. Index tablespaces
- E. The system tablespace
- F. The product directories and files for Oracle Applications

Answer: F

Question: 15

Which business flow is used for activities starting from product purchase to creating and closing service requests?

- A. Click to Order
- B. Campaign to Order
- C. Contract to Renewal
- D. Request to Resolution

Answer: D

Question: 16

ABC Corporation will be implementing Oracle E-Business Suite Release 12. Purchasing, Payables, Receivables, General Ledger, Assets, Projects, Order Management and Cash Management will be implemented. Select three business flows that would involve these products. (Choose three.)

- A. Click to Order
- B. Order to Cash
- C. Procure to Pay
- D. Project to Profit
- E. Demand to Build
- F. Campaign to Order

Answer: B, C, D

Question: 17

Identify two Descriptive Flexfield components whose values are used to determine Contexts. (Choose two.)

- A. The Context field
- B. Global Segments
- C. The Reference field
- D. Context-sensitive Segments

Answer: A, C

Question: 18

Exam Name:	Oracle EBS R12: E-Business Essentials		
Exam Type:	Oracle		
Exam Code:	1Z0-204	Total Questions:	199

Daily Business Intelligence reporting is available across all major product areas. Identify the Daily Business Intelligence tool that would provide manufacturing costs for an item over time by various cost elements.

- A. Product Intelligence
- B. Financials Intelligence
- C. Purchasing Intelligence
- D. Commodity Intelligence
- E. Manufacturing Intelligence

Answer: A

Question: 19

What is the base release for Oracle E-Business Suite Release 12?

- A. 11.0.0
- B. 12.0.0
- C. 12.0.1
- D. 11.0.1
- E. 12.1.0

Answer: B

Question: 20

Identify the sequence of steps to determine the Descriptive Flexfield name on a form in Oracle E-Business Suite Release 12 with Diagnostics enabled.

- 1) Select Help > Diagnostics > Examine.
- 2) The username of the DFF appears in the Value field.
- 3) Select the DFF name from the list of values in the "Field" field.
- 4) Select the "\$DESCRIPTIVE_FLEXFIELD\$" value for the Block name.

- A. 1, 2, 3, 4
- B. 1, 4, 3, 2
- C. 1, 3, 4, 2
- D. 4, 3, 1, 2

Answer: B

Question: 21

A Global Single Instance (GSI) provides the global enterprise with a single, complete data model. Identify three features in Oracle E-Business Suite Release 12 that support a GSI. (Choose three.)

- A. Maintenance of third-party applications
- B. Automation of standardized documents and audit processes
- C. Decentralization of operations by regions, divisions, or processes
- D. Consolidation of data centers and lowering administrative overhead
- E. Capture of statutory and customary local requirements in the same database

Answer: B, D, E

Question: 22

Identify the component in Subledger Accounting that enables you to meet the requirements of multiple accounting representations for an event.

Exam Name:	Oracle EBS R12: E-Business Essentials		
Exam Type:	Oracle		
Exam Code:	1Z0-204	Total Questions:	199

- A. Event Definition
- B. Event Classification
- C. Subledger Accounting Method
- D. Application Accounting Definition

Answer: D

Question: 23

Oracle Fusion Intelligence Release 12 is a set of new Application products and one of the first of the Fusion Applications. Select four features that Oracle Fusion Intelligence Release 12 provides. (Choose four.)

- A. Guided drilldown
- B. Integrated security
- C. Workflow notifications
- D. Guided navigation and action links
- E. Extends and configures Key Performance Indicators

Answer: A, B, D, E

Question: 24

Which two parameters facilitate cross organization reports in a Multi-Org environment? (Choose two.)

- A. Ledger
- B. Legal Entity
- C. Operating Unit
- D. Reporting Level
- E. Reporting Context

Answer: D, E

Question: 25

ABC Corp. has implemented Oracle Manufacturing applications from Oracle E-Business Suite Release 12. How is the data in the manufacturing applications partitioned?

- A. BY Application
- B. By Legal Entity
- C. By Operating Unit
- D. By Business Group
- E. By Inventory Organization

Answer: E

Question: 26

You receive a request to create a new responsibility for US Payables Manager. The request states that the new responsibility should have access to all menu items except Invoice Payments. Identify two options that you would use to restrict the Invoice Payments option on the new US Payables Manager responsibility. (Choose two.)

- A. Remove the request group from the new US Payables Manager responsibility.
- B. Create a Menu Exclusion for Invoice Payments on the US Payables Manager responsibility.
- C. Create an Item Exclusion for Invoice Payments on the US Payables Manager responsibility.
- D. Create a Security Attribute for Invoice Payments on the US Payables Manager responsibility.

Exam Name:	Oracle EBS R12: E-Business Essentials		
Exam Type:	Oracle		
Exam Code:	1Z0-204	Total Questions:	199

E. Create a new menu excluding the Invoice Payments option and attach the new menu to the responsibility.

Answer: B, E

Question: 27

What are the three elements involved in submitting a concurrent request? (Choose three.)

- A. Selecting Operating Unit
- B. Selecting report language
- C. Providing completion option
- D. Defining a submission schedule
- E. Selecting the request or request set to be submitted

Answer: C, D, E

Question: 28

XYZ Corp. has acquired ABC Corp. XYZ operates with Multi-Org Access Control. Consequently XYZ Corp. needs to add additional Operating Units. Identify the statement that describes the sequence for adding additional Operating Units.

- A. It is not possible to add additional Operating Units.
- B. Set the MO: Operating Unit profile option, run the Replicate Seed Data concurrent request, create the Operating Unit, and create new responsibilities as necessary.
- C. Set the MO: Security Profile profile option, run the Replicate Seed Data concurrent request, create the Operating Unit, and create new responsibilities as necessary.
- D. Create the Operating Unit, run the Replicate Seed Data concurrent request, create new responsibilities as necessary, and set up the MO: Default Operating Unit profile option.
- E. Create the Operating Unit, run the Replicate Seed Data concurrent request, assign the Operating Unit to a security hierarchy, run Security List maintenance concurrent program, create new responsibilities as necessary, and set up the MO: Security Profile profile option.

Answer: E

Question: 29

A new Receivables Inquiry responsibility is created for the Denmark Operating Unit and is assigned to the end users. You receive a call from the end user, who states that the Sweden Receivables data is displayed on the Denmark Receivables Inquiry screen. What is the cause of the wrong data being displayed?

- A. Incorrect exclusions on the responsibility
- B. Incorrect menu added to the responsibility
- C. Incorrect Data Group added to the responsibility
- D. Incorrect Request Group added to the responsibility
- E. Incorrect Operating Unit Profile Option set for the responsibility

Answer: E

Question: 30

Application Security consists of User, Responsibility, and Self-Service Application Security. Select three authorizations to which a responsibility allows access. (Choose three.)

- A. Ledger
- B. Legal Entity
- C. Business Groups

Exam Name:	Oracle EBS R12: E-Business Essentials		
Exam Type:	Oracle		
Exam Code:	1Z0-204	Total Questions:	199

- D. A specific application or applications
- E. A restricted list of windows, functions, and reports

Answer: A, D, E

Question: 31

You have logged in to the Oracle E-Business Suite Release 12 instance and accessed your worklist. You see four FYI notifications in your default Worklist view. You opened the first notification and clicked the "OK" button after reviewing the content. Identify three things that can happen after you return to your worklist. (Choose three.)

- A. You see four notifications in your worklist.
- B. You see three notifications in your worklist.
- C. Status of the first notification has been updated to "Delete."
- D. Status of the first notification has been updated to "Closed."
- E. You can view the first notification by choosing the "All Notifications" view from your worklist.
- F. You can view the first notification by choosing the "FYI Notifications" view from your worklist.

Answer: B, D, E

Question: 32

Identify two features related to parameters in a Daily Business Intelligence report. (Choose two.)

- A. Parameters are based on responsibilities.
- B. Each page in a report contains common parameters.
- C. Parameters can be defined for individual regions of a report.
- D. Multiple primary dimension parameters can be associated with a page in a report.
- E. The primary dimension parameter is different for each page in a Daily Business Intelligence report.

Answer: B, E

Question: 33

John has set up a Context to capture additional information on the Invoice Lines DFF in Oracle Payables. He used Attributes 5, 6, 7, and 9 for this Context. Now he wants to capture additional information using global segments in the same DFF. Select two Attributes that John can use to set up "Global Data Element" segments. (Choose two.)

- A. 5
- B. 6
- C. 7
- D. 8
- E. 9
- F. 10

Answer: D, F

Question: 34

You are working on an implementation of Oracle Daily Business Intelligence Release 12 at ABC Corp.

Your client has three requirements:

1. Ability to export to Excel or PDF daily intelligence data
2. Ability to delegate roles to subordinates

Exam Name:	Oracle EBS R12: E-Business Essentials		
Exam Type:	Oracle		
Exam Code:	1Z0-204	Total Questions:	199

3. Ability to summarize data using flexible time periods

Select the Daily Business Intelligence product that you would recommend to your client.

- A. Oracle Fusion Intelligence
- B. Oracle Financials Intelligence
- C. Oracle Purchasing Intelligence
- D. Oracle Interaction Center Intelligence
- E. Oracle Human Resources Intelligence

Answer: A

Question: 35

Company ABC added a new responsibility to an existing Oracle E-Business Suite Release 12 application. The System Administrator sets the MO: Operating Unit profile option at the Application level. The Application level will override the _____ level.

- A. Site
- B. Responsibility
- C. User and Responsibility
- D. User, Responsibility, and Site

Answer: A

Question: 36

Identify three correct statements about the Operating Unit in a Multi-Org model of Oracle E-Business Suite Release 12. (Choose three.)

- A. It is the highest level in the Multi-Org structure.
- B. It is an organization type that secures transaction data.
- C. An Operating Unit can be assigned to multiple Legal Entities.
- D. An Operating Unit can be associated with a single Legal Entity.
- E. Multiple Operating Units can be assigned to a single responsibility.

Answer: B, D, E

Question: 37

An activity in a workflow process can be a _____.

- A. Notification or a subprocess, but not a PL/SQL function
- B. Subprocess or a PL/SQL function, but not a notification
- C. PL/SQL function or a notification, but not a subprocess
- D. PL/SQL function, a notification, a subprocess, or a business event
- E. PL/SQL function, a subprocess, or a business event, but not a notification

Answer: D

Question: 38

Identify two features of the Notification System in Oracle Workflow. (Choose two.)

- A. Executes workflow rules and functions
- B. Enables any user with access to the Internet to be included in a workflow process
- C. Notifies the loading of a workflow process definition file from a flat file to a database
- D. Leverages Oracle Advanced Queuing to enable business events to communicate across systems

Exam Name:	Oracle EBS R12: E-Business Essentials		
Exam Type:	Oracle		
Exam Code:	1Z0-204	Total Questions:	199

E. Provides access to the worklist from Oracle E-Business Suite Release 12 through the worklist web pages

Answer: B, E

Question: 39

Which five options are available when scheduling a Periodic concurrent request in Oracle E-Business Suite Release 12? (Choose five.)

- A. Day(s)
- B. Year(s)
- C. Hour(s)
- D. Week(s)
- E. Month(s)
- F. Minute(s)
- G. Second(s)

Answer: A, C, D, E, F

Question: 40

ABC Corp. has a number of service calls that require a resource to be designated. Using the CRM Application Foundation module, identify the component that helps ABC Corp. designate resources that will own and work on the task.

- A. Task Manager
- B. Resource Manager
- C. Escalation Manager
- D. Assignment Manager

Answer: D

Question: 41

Select three features that Multi-Org provides to satisfy business needs. (Choose three.)

- A. Secures user access to data
- B. Supports fixed asset management
- C. Procures from one Legal Entity and receives in another
- D. Supports multiple language installations of Oracle Applications
- E. Supports any number of business units within a single installation

Answer: A, C, E

Question: 42

Identify three true statements regarding Multiple Organization reporting. (Choose three.)

- A. Cross Organization reports and multiple Organization reports are the same.
- B. Cross Organization reports can be submitted for a Reporting Level of Ledger.
- C. Multiple Organization reports can be submitted for a Reporting Level of Ledger.
- D. Multiple Organization reports produce outputs for different Operating Units one at a time from a single responsibility.
- E. Cross Organization reports produce outputs across different Operating Units in a single report from a single responsibility.
- F. Multiple Organization reports produce outputs for different Operating Units in a single report output from a single responsibility.

Exam Name:	Oracle EBS R12: E-Business Essentials		
Exam Type:	Oracle		
Exam Code:	1Z0-204	Total Questions:	199

Answer: B, D, E

Question: 43

A Ledger is a financial reporting entity. What is new in Oracle E-Business Suite Release 12 that facilitates generation of accounting entries?

- A. Ledger
- B. Chart of Accounts
- C. Multi-Org Structure
- D. Accounting Convention
- E. Financial Accounting Calendar

Answer: D

Question: 44

Which two statements are true regarding partitioning of data by an application? (Choose two.)

- A. General Ledger is partitioned by Ledgers.
- B. Accounts Payable is partitioned by Ledgers.
- C. Fixed Assets are partitioned by Operating Unit.
- D. Accounts Receivable is partitioned by Operating Unit.
- E. Order Management is partitioned by Inventory Organization.

Answer: A, D

Question: 45

You have received a workflow notification from the Oracle E-Business Suite Release 12 instance, which requires an electronic signature in your response. Identify the true statement regarding your notification response.

- A. You can reply to the email notification by attaching your electronic signature.
- B. You can reply to the email by providing your login password to Oracle E-Business Suite Release 12.
- C. You can submit your response from any of your worklists after logging in to the Oracle E-Business Suite Release 12 instance.
- D. You can submit your response only from your personal worklist after logging in to the Oracle E-Business Suite Release 12 instance.

Answer: C

Question: 46

Identify three features of Multi-Org. (Choose three.)

- A. The data can be logically partitioned.
- B. Users can be assigned to specific organizations.
- C. It defines organizations and the relationships between them.
- D. Multiple installations of Oracle Applications products are needed.
- E. It enables at most two business units to use a single installation of Oracle Applications.

Answer: A, B, C

Question: 47

Identify two business benefits of using Multi-Org Access Control. (Choose two.)

- A. Easier assignment of security rules

Exam Name:	Oracle EBS R12: E-Business Essentials		
Exam Type:	Oracle		
Exam Code:	1Z0-204	Total Questions:	199

- B. Reporting across Operating Units using single responsibility
- C. Inquiry-only access to data across different Operating Units
- D. Transaction entry across Operating Units using one responsibility
- E. Transaction entry across Operating Units using multiple responsibilities

Answer: C, D

Question: 48

ABC Corporation has set up the Accounting Key Flexfield. It has also set up a Descriptive Flexfield to store vehicle information associated with the asset category "Vehicle." Identify three correct statements. (Choose three.)

- A. The Descriptive Flexfield is called an "intelligent key structure."
- B. The Descriptive Flexfield for the asset category "Vehicle" captures only additional information.
- C. The Descriptive Flexfield for the asset category "Vehicle" appears as a normal field on a form.
- D. The combination of values in the Accounting Flexfield identifies a particular business entity or class of entities.
- E. You can define cross-validation rules to control the allowable combinations of segment values for the Accounting Flexfield.

Answer: B, D, E

Question: 49

What are the three characteristics of an application and Oracle ID when defining a Data Group? (Choose three.)

- A. An application can be listed only once in a Data Group.
- B. An Oracle ID can be paired with more than one application.
- C. An application can be listed more than once in a Data Group.
- D. Custom applications registered with Oracle Applications can be included in a Data Group.
- E. Custom applications can be included in a Data Group and paired with an existing Oracle ID.

Answer: A, B, D

Question: 50

Identify two features of a table-validated Value Set. (Choose two.)

- A. A table-validated Value Set has no list of approved values associated with it.
- B. Table-validated Value Sets obtain their lists of approved values from existing application tables.
- C. The values in a table-validated Value Set are stored in Oracle Application Object Library's tables.
- D. In a table-validated Value Set, you need to enter each value manually using the Segment values window.
- E. A table-validated Value Set enables you to use your own application tables as Value Sets for Flexfield Segments.

Answer: B, E

Question: 51

Identify three features of the Workflow Engine in Oracle Workflow Architecture. (Choose three.)

- A. Resides in Oracle Database
- B. Interacts with Advanced Queuing
- C. Resides in Oracle Application Server

Exam Name:	Oracle EBS R12: E-Business Essentials		
Exam Type:	Oracle		
Exam Code:	1Z0-204	Total Questions:	199

- D. Interacts with Business Event System
- E. Implements workflow process definitions at run time
- F. Implements workflow process definitions at design time

Answer: A, D, E

Question: 52

During the cutover phase of a project to implement Oracle E-Business Suite Release 12, you are responsible for converting historical account balances into Oracle General Ledger from a legacy system. There is no Account Code Combination setup in the Production Instance. Identify the setup in the Accounting Key Flexfield structure that is required to perform this conversion.

- A. Define Value Sets and assign them to Segments.
- B. Define Segments in the Accounting Flexfield structure.
- C. Qualify one of the Segments as the Balancing Segment.
- D. The Key Flexfield Segments have to be enabled and displayed.
- E. Select the "Allow Dynamic Inserts" check box in the Accounting Key Flexfield structure.

Answer: E

Question: 53

You are the Human Resources lead for the ERP implementation of ABC Corporation. You have defined the employees in Oracle Human Resources. Select three activities that utilize the employee record. (Choose three.)

- A. Approvals
- B. Asset assignment
- C. Organization creation
- D. Journal Entry creation
- E. AutoCreate Purchase Orders

Answer: A, B, E

Question: 54

Which two statements are correct regarding a table-validated Value Set? (Choose two.)

- A. A table-validated Value Set does not provide a predefined list of values.
- B. You use a table-validated Value Set when you have a set of values that is already maintained in an application table.
- C. You cannot define a table that you want to use when defining the table-validated Value Set.
- D. You can use a SQL query to retrieve all the approved values from the table when defining the table-validated Value Set.

Answer: B, D

Question: 55

Which two statements explain the role of the Desktop Tier in Oracle E-Business Suite Release 12? (Choose two.)

- A. It displays the Oracle E-Business Suite Release 12 Swan user interface.
- B. It manages communication between the middle tier and the database tier.
- C. It is responsible for forms displayed using Java (forms-based access) or HTML JavaScript.
- D. It hosts various servers and service groups that process business logic for Oracle Applications.
- E. It is responsible for storing and executing most of the business logic associated with Oracle E-Business Suite Release 12.

Exam Name:	Oracle EBS R12: E-Business Essentials		
Exam Type:	Oracle		
Exam Code:	1Z0-204	Total Questions:	199

Answer: A, C

Question: 56

Identify four components of the Fusion Business Intelligence Embedded Dashboard. (Choose four.)

- A. Real-time chat link
- B. Multiple currencies
- C. Flexible time periods
- D. Multiple data widgets
- E. Web conferencing link
- F. Key Performance Indicators

Answer: B, C, D, F

Question: 57

You are the project manager with access to the Oracle Project Management application in Oracle E-Business Suite Release 12. You have granted User X access to your worklist. User X now logs in to Oracle E-Business Suite Release 12 and accesses his or her worklist by clicking the Workflow Notifications link. Identify three actions User X can perform. (Choose three.)

- A. Create vacation rules for you.
- B. Approve projects on your behalf.
- C. Grant access to your worklist to another user.
- D. View the username of the worklist owner in the worklist.
- E. Access your worklist automatically without performing any action.
- F. Access your worklist by clicking the "Switch User" button, and then selecting your name.

Answer: B, D, F

Question: 58

Which three statements are true about Oracle Workflow and Oracle Alerts? (Choose three.)

- A. Alerts can perform only one action.
- B. Workflow can support complex conditional logic.
- C. Alerts can be configured for any frequency of occurrence.
- D. Workflows can wait for a user response during an activity.
- E. Alerts can perform multiple actions in a sequence that you specify.
- F. Alerts run only when a database record is either updated or created.

Answer: B, D, E

Question: 59

Company ABC has requested you to define a custom application to support custom forms and reports. The DBAs have created a new CUSTOM_TOP directory. Which are the three mandatory fields required to define a new custom application? (Choose three.)

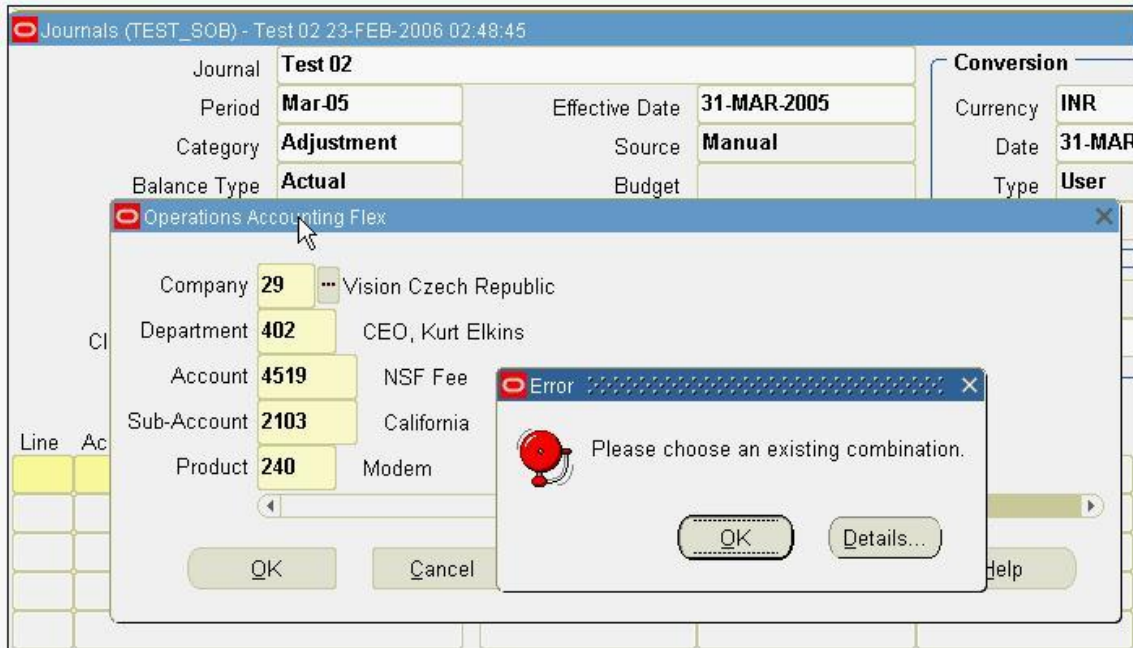
- A. Base path
- B. Application
- C. Description
- D. Short Name
- E. Responsibility

Answer: A, B, D

Exam Name:	Oracle EBS R12: E-Business Essentials		
Exam Type:	Oracle		
Exam Code:	120-204	Total Questions:	199

Question: 60

View the Exhibit. While entering a journal in the Journals form, you enter a code combination of 29.402.4519.2103.240 in the five-segment Accounting Flexfield. However, you are unable to proceed after entering this account combination. What could be the problem in the structure definition of the Accounting Flexfield?



- A. The "Freeze Rollup Groups" check box is selected.
- B. The "Allow Dynamic Inserts" check box is deselected.
- C. The "Freeze Flexfield Definition" check box is selected.
- D. The "Cross-Validate Segments" check box is selected.

Answer: B

Question: 61

Oracle Daily Business Intelligence functions are secured using standard Oracle Applications function security. Choose three dashboards that are secured by the Inventory Organization. (Choose three.)

- A. Inventory Management
- B. Warehouse Management
- C. Procurement Management
- D. Commodity Supplier Management
- E. Customer Fulfillment Management

Answer: A, B, E

Question: 62

Identify three Fusion Business Intelligence products for Oracle E-Business Suite Release 12. (Choose three.)

- A. Oracle CRM Analytics
- B. Oracle Sales Analytics

Exam Name:	Oracle EBS R12: E-Business Essentials		
Exam Type:	Oracle		
Exam Code:	1Z0-204	Total Questions:	199

- C. Oracle Treasury Analytics
- D. Oracle Financial Analytics
- E. Oracle Commodity Analytics
- F. Oracle Supply Chain Analytics

Answer: B, D, F

Question: 63

Embedded Dashboards are a feature of Oracle Fusion Business Intelligence Release 12. Select three additional features that Embedded Dashboards provide. (Choose three.)

- A. Multiple currencies
- B. Flexible time periods
- C. Use of workflow notifications
- D. Ability to export to Excel or PDF
- E. Ability to create/import transactions

Answer: A, B, D

Question: 64

If the user has to set Multi-Org preferences, the System Administrator has to assign _____.

- A. The User Preferences function to the responsibility
- B. The Multi-Org preferences menu to the responsibility
- C. The User Preferences menu item to the responsibility
- D. The Multi-Org preferences function to the responsibility

Answer: A

Question: 65

Which two statements are true regarding ownership of shared entities? (Choose two.)

- A. Items is owned by Oracle Purchasing, whereas Locations is owned by Oracle Receivables.
- B. Suppliers is owned by Oracle Purchasing, whereas Units of Measure is owned by Oracle Inventory.
- C. Ledger is owned by Oracle General Ledger, whereas Locations is owned by Oracle Human Resources.
- D. Customers is owned by Oracle Human Resources, whereas Locations is owned by Oracle Receivables.
- E. Sales Force is owned by Oracle Order Management, whereas Employees is owned by Oracle Human Resources.

Answer: B, C

Question: 66

It is your first day at a client site to implement Oracle E-Business Suite Release 12. The client wants you to log a Service Request using MetaLink, regarding a problem with the Invoice Workbench form in Oracle Payables. Identify the key information that is required to initiate a Service Request for this client.

- A. Error Message Number
- B. Brief Problem Statement
- C. Customer Support Identifier
- D. Oracle Payables Patch Set level
- E. Version of the Invoice Workbench form

Exam Name:	Oracle EBS R12: E-Business Essentials		
Exam Type:	Oracle		
Exam Code:	1Z0-204	Total Questions:	199

Answer: C

Question: 67

You are involved in a project to upgrade to Oracle E-Business Suite, Release 12. You need more information about the upgrade processes and paths. Where would you find the upgrade guide for Oracle E-Business Suite?

- A. AppsNet
- B. Bug Database
- C. Technical Forums
- D. MetaLink Knowledge Base
- E. Oracle Technology Network
- F. Customer Knowledge Exchange

Answer: D

Question: 68

As a system administrator for Oracle E-Business Suite Release 12, which two actions can you perform on user passwords? (Choose two.)

- A. Set the initial password.
- B. Change an existing password.
- C. See the password that was chosen by the user.
- D. Set varying minimum lengths of passwords for different users.

Answer: A, B

Question: 69

Identify two correct statements related to Key Performance Indicators and the KPI region in Daily Business Intelligence. (Choose two.)

- A. Can be of table format only
- B. Can be configured for each dashboard
- C. Organizes data into reporting hierarchies
- D. Is a strategic business factor that is used for reporting
- E. Contains a unique set of graphical information on a dashboard

Answer: B, D

Question: 70

Identify two types of regions in Daily Business Intelligence. (Choose two.)

- A. Menu
- B. Table
- C. Folder
- D. Report
- E. Graph

Answer: B, E

Question: 71

Identify the two benefits of using Multi-Org Access Control. (Choose two.)

- A. View asset information across multiple asset books.

Exam Name:	Oracle EBS R12: E-Business Essentials		
Exam Type:	Oracle		
Exam Code:	1Z0-204	Total Questions:	199

- B. Restrict access to users based on their Organization assignments.
- C. Submit and view data across different Ledgers using a single responsibility.
- D. Enter Payables invoices for different Operating Units using a single responsibility.
- E. View Consolidated requisitions across Operating Units using a single responsibility.

Answer: D, E

Question: 72

Which two statements are true about the features of Daily Business Intelligence? (Choose two.)

- A. Key Performance Indicators cannot be disabled.
- B. The data that has changed since the last refresh is updated.
- C. Parameters regulate user access to content and functionality.
- D. Incremental refresh capabilities of Oracle Database are leveraged.

Answer: B, D

Question: 73

The rule-based accounting engine that centralizes accounting for Oracle E-Business Suite Release 12 is called _____.

- A. General Ledger
- B. Accounting Engine
- C. Subledger Accounting
- D. Centralized Accounting
- E. Global Accounting Engine
- F. Financial Consolidation Hub

Answer: C

Question: 74

Identify three features of a Value Set. (Choose three.)

- A. Value Sets are mandatory.
- B. Value Sets must contain a list of values.
- C. Value Sets control the values for many report parameters.
- D. The same Value Set can be shared between different Flexfields.
- E. A Value Set is a definition of the values approved for entry by a particular Flexfield Segment.

Answer: C, D, E

Question: 75

Select three prebuilt features that Oracle E-Business Suite Release 12 Fusion Business Intelligence applications contain. (Choose three.)

- A. Reports
- B. Prompts
- C. Security rules
- D. Role-based dashboards
- E. Fusion Business Intelligence responsibilities

Answer: A, B, D

Question: 76

Exam Name:	Oracle EBS R12: E-Business Essentials		
Exam Type:	Oracle		
Exam Code:	1Z0-204	Total Questions:	199

Identify two tasks of the Application tier in Oracle E-Business Suite Release 12 Applications architecture. (Choose two.)

- A. Process business logic
- B. Store business logic in the database
- C. Retrieve business logic from the database
- D. Manage communication between desktop/client tier and database tier

Answer: A, D

Question: 77

ABC Corp. is installing Oracle E-Business Suite Release 12 Applications on two nodes: A and B. On Node A, it has installed the Form server, the Web server, and the Administration server. On Node B, it has installed the Concurrent Processing server. By default, on which node would the Reports server be installed?

- A. Node A
- B. Node B
- C. Neither of the nodes
- D. Both Node A and Node B

Answer: B

Question: 78

ABC Corp. wants to capture additional information about the Invoice Header in Oracle Payables. It wants to use multiple Descriptive Flexfield (DFF) structures and requires the appropriate structure to default automatically based on the Vendor Type selected on the Invoice. Choose a method to implement this DFF.

- A. Define a Value Set for each Vendor Type.
- B. Define a DFF Context for each Vendor Type.
- C. Define a DFF Segment for each Vendor Type.
- D. Define a Global Segment for each Vendor Type.
- E. Define a DFF Context for each Vendor Type and set the Reference field as Vendor Type.

Answer: E

Question: 79

Company ABC is implementing Oracle Application Manager to manage and monitor the Oracle application. Identify four tasks that will assist system administrators when using Oracle Application Manager. (Choose four.)

- A. Manage patches.
- B. Monitor system security.
- C. Monitor and tune performance.
- D. Diagnose and correct problems.
- E. Monitor standard report requests.
- F. Manage application responsibilities.

Answer: A, B, C, D

Question: 80

ABC Corp. has the following Organization Structure:

- 1) Legal Entity: A

Exam Name:	Oracle EBS R12: E-Business Essentials		
Exam Type:	Oracle		
Exam Code:	1Z0-204	Total Questions:	199

- 2) Operating Units: B and C
- 3) Balancing Entities: 10, 20, and 30

Identify three correct statements regarding the Balancing Entity. (Choose three.)

- A. Each Balancing Entity must balance within itself.
- B. There can be multiple Balancing Entities within an Operating Unit.
- C. Balancing Entity is the lowest postable unit in the Chart of Accounts.
- D. Balancing Entities can be automatically secured at the Legal Entity level.
- E. Balancing Entities can be secured at the Operating Unit level through Security Rules.

Answer: A, B, E

Question: 81

Which four options are determined by a responsibility in Oracle E-Business Suite Release 12? (Choose four.)

- A. Inherited roles
- B. Accessible reports
- C. Applicable Ledgers
- D. Accessible Applications
- E. Accessible menus and forms

Answer: B, C, D, E

Question: 82

Identify three standard views that you can access from the Notification Worklist of Oracle Workflow Self-Service Web pages in Oracle E-Business Suite Release 12. (Choose three.)

- A. Open Notifications
- B. To Do Notifications
- C. Closed Notifications
- D. Notifications From Me
- E. Rejected Notifications

Answer: A, B, D

Question: 83

Which tier in Oracle E-Business Suite Release 12 is responsible for storing application data?

- A. Database Tier
- B. Application Tier
- C. Client (Desktop) Tier
- D. Both Database Tier and Application Tier

Answer: A

Question: 84

Identify the four resources that Oracle Technology Network (OTN) provides. (Choose four.)

- A. Sample codes
- B. Bug Database
- C. Technical articles
- D. Product downloads
- E. Product documentation

Exam Name:	Oracle EBS R12: E-Business Essentials		
Exam Type:	Oracle		
Exam Code:	1Z0-204	Total Questions:	199

F. Applications Electronic Technical Reference Manuals (eTRM)

Answer: A, C, D, E

Question: 85

Identify the two values that the Reporting Level parameter can have when using cross organization reports with the Multi-Org Access Control feature. (Choose two.)

- A. Ledger
- B. Legal Entity
- C. Operating Unit
- D. Security Profile
- E. Business Group

Answer: A, C

Question: 86

Oracle E-Business Suite Release 12 is designed to assist companies meet the business challenges of globalization. Select four features of Oracle E-Business Suite Release 12 that support efficient management of a global enterprise in a single database. (Choose four.)

- A. Has common data model
- B. Supports multiple currencies
- C. Supports multiple data models
- D. Supports separate legacy systems
- E. Supports statutory and customary local requirements
- F. Extends internal process support beyond enterprise boundaries

Answer: A, B, E, F

Question: 87

Identify three steps to be performed after defining a flexfield structure, but before entering values. (Choose three.)

- A. Select the "Freeze Flexfield Definition" check box.
- B. Click the Compile button to build the flexfield structure.
- C. Save your changes before freezing the flexfield definition.
- D. Submit a concurrent request to build the flexfield structure.
- E. Do not save your changes before freezing the flexfield definition.

Answer: A, B, C

Question: 88

Identify two features of a Value Set that has a validation type of "None." (Choose two.)

- A. It has an approved list of values associated with it.
- B. The entered value must meet the formatting requirements.
- C. The Flexfield value security rules cannot be used for a segment that uses this Value Set.
- D. Users can enter any value that they want even if it does not meet formatting requirements.

Answer: B, C

Question: 89

What are the four required fields when defining a request set? (Choose four.)

Exam Name:	Oracle EBS R12: E-Business Essentials		
Exam Type:	Oracle		
Exam Code:	1Z0-204	Total Questions:	199

- A. Set
- B. Owner
- C. Set Code
- D. Application
- E. Description
- F. Active Date

Answer: A, C, D, F

Question: 90

A _____ is a container for a unique set of information on a Daily Business Intelligence overview page.

- A. Report
- B. Region
- C. Dashboard
- D. Key Performance Indicator

Answer: B

Question: 91

ABC Corp. decides to implement Oracle Receivables, Oracle Payables, and Oracle Purchasing. To access any of these applications, a user must be given access to a responsibility associated with a type of organization. Identify the type of organization with which the responsibility can be associated.

- A. Legal Entity
- B. Operating Unit
- C. Asset organization
- D. Inventory organization

Answer: B

Question: 92

Identify the platform that hosts the Workflow Engine and the Business Event System.

- A. Oracle Database
- B. Workflow Manager
- C. Oracle HTTP Server
- D. Oracle Workflow Builder
- E. Oracle Application Server

Answer: A

Question: 93

Identify the profile option that is required to enable Multi-Org Access Control for multiple Operating Units.

- A. HR: User Type
- B. MO: Operating Unit
- C. MO: Security Profile
- D. HR: Business Group
- E. MO: Default Operating Unit

Answer: C

Exam Name:	Oracle EBS R12: E-Business Essentials		
Exam Type:	Oracle		
Exam Code:	1Z0-204	Total Questions:	199

Question: 94

In Oracle E-Business Suite Release 12, which server (or services) supports data-intensive programs that run in the background?

- A. Admin Server
- B. Web Services
- C. Reports Server
- D. Forms Services
- E. Concurrent Processing Server

Answer: E

Question: 95

Select three true statements about Business Event System in Oracle Workflow. (Choose three.)

- A. Resides in Oracle Database
- B. Resides in Oracle Application Server
- C. Can be used with Workflow Engine to integrate external systems
- D. Consists of Event Manager, which lets you register workflow processes
- E. Uses Advanced Queuing to send messages from one system to another

Answer: A, C, E

Question: 96

The WF: Notification Reassign Mode profile option is set to "Transfer" for User A and set to "Reassign" for User B. User B granted his or her worklist access to User A while going on vacation. Identify three statements that apply to User A when he or she accesses User B's worklist. (Choose three.)

- A. User A will be able to grant access to User B's worklist to another user.
- B. User A will not be able to grant access to User B's worklist to another user.
- C. User A will see the "Transfer" button when he or she accesses User B's worklist.
- D. User A will see the "Reassign" button when he or she accesses User B's worklist.
- E. User A will be able to "Delegate" and "Transfer" User B's notifications to other users.
- F. User A will be able to "Transfer" but not "Delegate" User B's notifications to other users.

Answer: B, C, F

Question: 97

ABC Corp. is in the business of manufacturing laptops. They run marketing campaigns to attract and secure orders, and then produce a forecast based on the sales order history. Identify the two business flows in Oracle E-Business Suite Release 12 that meet their requirements. (Choose two.)

- A. Order to Cash
- B. Forecast to Plan
- C. Demand to Build
- D. Campaign to Order
- E. Contract to Renewal

Answer: B, D

Question: 98

Exam Name:	Oracle EBS R12: E-Business Essentials		
Exam Type:	Oracle		
Exam Code:	1Z0-204	Total Questions:	199

The default Operating Unit in a Multi-Org-enabled form with the Operating Unit field will be defaulted from the _____.

- A. Profile option MO: Operating Unit set at the user level in profile options
- B. Default Operating Unit set by the user on the user preferences Web page
- C. Profile option MO: Operating Unit at the responsibility level in profile options
- D. Profile option MO: Default Operating Unit set at the user level in profile options
- E. Profile option MO: Default Operating Unit at the responsibility level in profile options

Answer: B

Question: 99

The Multi-Org feature in Oracle E-Business Suite Release 12 uses _____ to build a secure layer on top of the single-instance applications.

- A. Forms
- B. Database views
- C. Database Roles
- D. Database tables
- E. Database Columns

Answer: B

Question: 100

Identify two options that users can specify using Multi-Org preferences. (Choose two.)

- A. Set up the default Operating Unit
- B. Set up frequently accessed responsibilities
- C. Set up date, currency, and number formats
- D. Set up frequently accessed forms and webpages
- E. Set up the access to a limited list of Operating Units

Answer: A, E

Question: 101

Identify the order of steps that are involved in the Diagnostics Framework business flow for Subledger Accounting.

1. Enable SLA: Enable Diagnostics is set at the user or responsibility level.
2. Submit the Transaction Objects Diagnostics concurrent request.
3. Submit the Create Accounting program.
4. Enable Trace.

- A. 1, 3, 2
- B. 1, 2, 3
- C. 2, 3, 1
- D. 3, 1, 2
- E. 4, 1, 2

Answer: A

Question: 102

What are the four levels at which you can set profile options? (Choose four.)

- A. Site

Exam Name:	Oracle EBS R12: E-Business Essentials		
Exam Type:	Oracle		
Exam Code:	1Z0-204	Total Questions:	199

- B. User
- C. Application
- D. Organization
- E. Responsibility

Answer: A, B, C, E

Question: 103

Which four products in Oracle E-Business Suite Release 12 require a Multi-Org setup? (Choose four.)

- A. Payables
- B. Purchasing
- C. Receivables
- D. General Ledger
- E. Order Management

Answer: A, B, C, E

Question: 104

Select four tasks that you can perform from the Self-Service home page of Oracle Workflow embedded in Oracle E-Business Suite Release 12. (Choose four.)

- A. View "FYI Notifications."
- B. Purge Closed notifications.
- C. View "Notifications From Me."
- D. View participant responses for a completed workflow.
- E. Access status diagram of workflows that are in any status.
- F. Access status diagram of workflows that are with status "Processed" or "Errored."

Answer: A, C, D, E

Question: 105

Identify three true statements about defining actions in Oracle Alert. (Choose three.)

- A. An alert can contain only one Action Set.
- B. An alert can contain any number of Action Sets.
- C. When multiple actions are defined they must be included in an Action Set.
- D. Oracle Alert waits for user response before executing next action in an Action Set.
- E. When multiple actions are defined, they do not need to be included in an Action Set.
- F. Oracle Alert does not wait for user response before executing next action in an Action Set.

Answer: B, C, F

Question: 106

Paul wants to log in to Oracle E-Business Suite Release 12. Identify the first server to which his request would go.

- A. Web Server
- B. Reports Server
- C. Administration Server
- D. Concurrent Processing Server

Answer: A

Exam Name:	Oracle EBS R12: E-Business Essentials		
Exam Type:	Oracle		
Exam Code:	1Z0-204	Total Questions:	199

Question: 107

Daily Business Intelligence pages provide summarized content for a particular functional area. Identify three features that the pages contain. (Choose three.)

- A. Regions
- B. Reports
- C. Parameters
- D. Responsibilities
- E. Key Performance Indicators (KPIs)

Answer: A, C, E

Question: 108

You are a workflow user in the Oracle E-Business Suite Release 12 instance. Identify three tasks that you can perform using Status Monitor. (Choose three.)

- A. Access notification history.
- B. View participant responses.
- C. Reassign notifications to another user.
- D. View Error information for a failed workflow.
- E. Cancel a workflow that you no longer want to run.
- F. View the status diagram of a subprocess for a particular workflow process.

Answer: A, B, F

Question: 109

Identify two features of the Oracle E-Business Suite Release 12 Fusion Business Intelligence product. (Choose two.)

- A. Action links
- B. Guided drilldown
- C. Fusion dashboard launched from a separate Application Navigator
- D. Separate data security maintained by Fusion Business Intelligence
- E. View access determined by Fusion Business Intelligence responsibilities

Answer: A, B

Question: 110

Identify three correct statements for defining a Value Set. (Choose three.)

- A. Specify format validations.
- B. Specify Value Set attributes for a new Value Set.
- C. Always specify a minimum value in format validation.
- D. Use predefined Value Sets if they serve your purpose.
- E. The format validation need not be specified for a Dependent Value Set.

Answer: A, B, D

Question: 111

Which two statements are true regarding error handling in Oracle Workflow? (Choose two.)

- A. Workflow Engine captures errors.
- B. Workflow Manager captures errors.
- C. Default error handling is provided for subscription processing.
- D. Workflow Manager places errored events on the WF_ERROR queue.

Exam Name:	Oracle EBS R12: E-Business Essentials		
Exam Type:	Oracle		
Exam Code:	1Z0-204	Total Questions:	199

E. Notification System initiates the default error process after an error is reported.

Answer: A, C

Question: 112

Profile Option Security Hierarchy levels are Application, Site, Responsibility, and User. Which two are correct about the hierarchy levels? (Choose two.)

- A. User overrides Site.
- B. Site overrides User.
- C. Application overrides User.
- D. Responsibility overrides Site.
- E. Application overrides Responsibility.

Answer: A, D

Question: 113

ABC Corporation imports invoices from Suppliers through the Oracle Payables Open Interface tables. It wants to capture the Supplier Reference number on the Invoice Descriptive Flexfield and wants to review the Reference number on the interface form before importing invoices into Oracle Payables. Identify the two DFFs that you would implement and the Attribute you would use to capture the Supplier Reference number. (Choose two.)

- A. Invoice DFF with Attribute1
- B. Invoice DFF with Attribute2
- C. Invoice Lines DFF with Attribute1
- D. Invoice Distribution DFF with Attribute3
- E. Invoice Gateway Header DFF with Attribute2

Answer: B, E

Question: 114

Identify three components that you can register in Business Event System of Oracle Workflow. (Choose three.)

- A. Systems
- B. Processes
- C. Subscriptions
- D. Notification Mailer
- E. Workflow Engine
- F. Business Events

Answer: A, C, F

Question: 115

A company wants to secure its employee information by three regions: EMEA, AMERICAS, and APAC. This would entail the creation of three _____.

- A. Legal Entities
- B. Operating Units
- C. Business Groups
- D. HR Organizations
- E. Inventory Organizations

Answer: C

Exam Name:	Oracle EBS R12: E-Business Essentials		
Exam Type:	Oracle		
Exam Code:	1Z0-204	Total Questions:	199

Question: 116

XYZ Corp. is in the business of manufacturing cosmetics. It obtains and pays for raw materials. Which business flow in Oracle E-Business Suite Release 12 would map to the activities of obtaining and paying for raw materials?

- A. Order to Cash
- B. Procure to Pay
- C. Forecast to Plan
- D. Demand to Build
- E. Contract to Renewal

Answer: B

Question: 117

Identify two features of an "Independent" value set. (Choose two.)

- A. There is a predefined list of values for a segment.
- B. The values are stored in a product applications table.
- C. The values are stored in an Oracle Application Object Library table.
- D. You can enter a value other than those in the predefined list of values.

Answer: A, C

Question: 118

The WF: Notification Reassign Mode profile option is set to "Transfer" for User A. User A logs in to Oracle E-Business Suite Release 12. Identify three true statements regarding this. (Choose three.)

- A. User A will be able to delegate notifications to other users.
- B. The "Transfer" button appears on the Worklist pages for User A.
- C. The "Reassign" button appears on the Worklist pages for User A.
- D. User A will not be able to delegate notifications to other users.
- E. User A can transfer notifications by clicking the "Transfer" button on the Worklist pages.
- F. User A can transfer notifications by clicking the "Reassign" button, and then selecting the "Transfer" option from the Worklist pages.

Answer: B, D, E

Question: 119

Identify three features of Oracle Workflow Builder in Oracle Workflow Architecture. (Choose three.)

- A. Monitors workflows
- B. Resides in Oracle Application Server
- C. Defines and customizes workflow definitions
- D. Saves workflow process definition in a flat-file format
- E. Saves workflow process definition in a graphical file format
- F. Has Navigator tree and Process diagram as its components

Answer: C, D, F

Question: 120

In the Multi-Org model of Oracle E-Business Suite Release 12, which organization type owns Bank Account?

Exam Name:	Oracle EBS R12: E-Business Essentials		
Exam Type:	Oracle		
Exam Code:	1Z0-204	Total Questions:	199

- A. Ledger
- B. Legal Entity
- C. Operating Unit
- D. Balancing Entity
- E. Business Group

Answer: B

Question: 121

ABC Corp. has determined its Accounting Key Flexfield structure for the implementation of Oracle E-Business Suite Release 12. The Accounting Key Flexfield structure contains five Segments: Company, Business Unit, Department, Account, and Product.

They have the following requirements:

- 1) The Department values should be based on the Business Units.
- 2) They want to produce a quarterly Balance Sheet for each Company.

Which three statements are true? (Choose three.)

- A. The Product Value Set is dependent on the Accounts.
- B. The Business Unit Value Set is defined as Independent.
- C. The Account Segment has a Value Set with no Validation.
- D. The Company Segment is qualified as the Balancing Segment.
- E. The Department Segment is qualified as an Intercompany Segment.
- F. Cross-validation rules are required to enforce dependency of Departments on the Business Units.

Answer: B, D, F

Question: 122

Identify the four end-user features of Oracle Application Object Library that provide uniformity of function across the Oracle E-Business Suite Release 12 Applications. (Choose four.)

- A. Custom menus
- B. Standard User Interface
- C. Applications Online Help
- D. Shared Flexfield value sets
- E. shared Graphical User Interface
- F. Standard Report Submission (SRS)

Answer: B, C, D, F

Question: 123

You are working on an implementation of Oracle E-Business Suite Release 12 Fusion Business Intelligence.

Your client has three requirements:

1. Ability to monitor customers and the collection processes
2. Ability to perform complete procurement analysis from Requisition through Payment
3. Ability to identify the customers and transactions that are providing maximum profit

Exam Name:	Oracle EBS R12: E-Business Essentials		
Exam Type:	Oracle		
Exam Code:	1Z0-204	Total Questions:	199

Select the three Oracle Fusion Business Intelligence products that would meet your client's requirements. (Choose three.)

- A. Oracle Sales Analytics
- B. Oracle Financial Analytics
- C. Oracle Marketing Analytics
- D. Oracle Supply Chain Analytics
- E. Oracle Order Fulfillment Analytics

Answer: B, C, D

Question: 124

Identify four products in the Oracle Applications Technology Layer. (Choose four.)

- A. Oracle Tutor (TU)
- B. Oracle Workflow (WF)
- C. Oracle Applications DBA (AD)
- D. Oracle Application Utilities (AU)
- E. Oracle Applications Framework (FWK)
- F. Oracle Daily Business Intelligence (DBI)

Answer: B, C, D, E

Question: 125

Identify three features of a Balancing Entity. (Choose three.)

- A. Balance sheets are prepared for a Balancing Entity.
- B. A Legal Entity may comprise one or more than one balancing segments.
- C. Multiple Balancing Entities within the same Operating Unit structure is not supported.
- D. A Balancing Entity is represented as a balancing segment value in the accounting flexfield structure.
- E. Oracle E-Business Suite Release 12 automatically secures balancing segment values within your chart of accounts with specific Legal Entities or Operating Units.

Answer: A, B, D

Question: 126

In a Multi-Org Access Control scenario, the profile option used to derive the Operating Unit for determining the tax code on GL Journals comes from _____.

- A. MO: Operating Unit
- B. MO: Security Profile
- C. GL: Data Access Set
- D. HR: Business Group
- E. MO: Default Operating Unit

Answer: A

Question: 127

XYZ Corp. has shipped goods against purchase orders to ABC Corp. ABC Corp. now has to pay for the goods received, and also account and reconcile the transactions. Identify the Oracle E-Business Suite Release 12 Applications involved in these activities for ABC Corp.

- A. Cash Management, Inventory, Payables, and Purchasing
- B. Inventory, General Ledger, Purchasing, and Cash Management

Exam Name:	Oracle EBS R12: E-Business Essentials		
Exam Type:	Oracle		
Exam Code:	1Z0-204	Total Questions:	199

- C. Inventory, Order Management, General Ledger, and Cash Management
- D. Cash Management, General Ledger, Inventory, Payables, and Purchasing

Answer: D

Question: 128

The Oracle E-Business Suite Release 12 architecture supports multiple languages. Which three statements support the user's ability to successfully enter and view data in his or her specified language. (Choose three.)

- A. Character sets and fonts must be available on the middle tier.
- B. Language support must be available on the desktop client tier.
- C. Character sets and fonts must be available on the database tier.
- D. The character set of the browser is set by Oracle Applications for each session.
- E. The desktop browser must support character set and language-specific capabilities.
- F. The responsibility profile option values provide the default National Language Support (NLS) settings for all end users.

Answer: B, D, E

Question: 129

Which option describes a group of segments?

- A. Values
- B. Value set
- C. Flexfield structure
- D. Both structure and values

Answer: C

Question: 130

Identify two features of a Descriptive Flexfield. (Choose two.)

- A. It does not have a structure.
- B. It enables you to build "intelligent keys."
- C. It appears as a normal field on a form without any brackets.
- D. It enables you to implement context-sensitive fields that appear only when needed.
- E. It enables you to capture additional information in Oracle E-Business Suite Release 12 without programming.

Answer: D, E

Question: 131

In Oracle E-Business Suite Release 12, at which level can you exclude a function from a responsibility?

- A. Menu, submenu, or function
- B. Menu and submenu, but not function
- C. Menu and function, but not submenu
- D. Function and submenu, but not menu

Answer: A

Question: 132

Which three statements are true about modifying flexfield values? (Choose hree.)

Exam Name:	Oracle EBS R12: E-Business Essentials		
Exam Type:	Oracle		
Exam Code:	1Z0-204	Total Questions:	199

- A. The values cannot be disabled.
- B. The value description can be changed.
- C. The effective dates for a value can be limited.
- D. The values can be deleted after they are defined.
- E. The values cannot be modified after they are defined.

Answer: B, C, E

Question: 133

Identify three key benefits of Oracle Workflow in Oracle E-Business Suite release 12. (Choose three.)

- A. Sends collection notices to customers
- B. Provides self-service monitoring capabilities
- C. Enable automatic routing of business documents
- D. Delivers notifications and reminders of work to be done
- E. Automatically generates asset keys using asset key generator workflow
- F. Automatically creates purchase orders from self-service Web applications

Answer: B, C, D

Question: 134

Data Security Grants are used to provide users access to specific objects or functions. A grantee defines who is being granted access. The grantee can be one of three types. Identify the three types. (Choose three.)

- A. A specific user
- B. A group of users
- C. All users, except guest accounts
- D. All users, including guest accounts
- E. All users across multiple instances

Answer: A, B, C

Question: 135

Which business flow is used for activities starting from customer registration to setting up of product catalogs and targeted storefronts, and order capture?

- A. Click to Order
- B. Order to Cash
- C. Campaign to Order
- D. Contract to Renewal

Answer: A

Question: 136

You receive a request to create a new menu. Instead of creating a new menu, you modify an existing menu and save it to a different User Menu Name. What happens after saving the menu with a different User Menu Name?

- A. There will be two menus.
- B. The original menu is disabled.
- C. The new menu will not contain any functions.
- D. The new menu will overwrite the original menu.

Exam Name:	Oracle EBS R12: E-Business Essentials		
Exam Type:	Oracle		
Exam Code:	1Z0-204	Total Questions:	199

Answer: D

Question: 137

The database tier for the Oracle E-Business Suite Release 12 file system is stored in several top-level directories. One of these directories is DATA_TOP located on the database node machine. Which three components are stored in the DATA_TOP directory? (Choose three.)

- A. Redo log files
- B. Oracle Home
- C. Index tablespaces
- D. Product directories
- E. System tablespaces

Answer: A, C, E

Question: 138

Identify four features of Workflow Monitor. (Choose four.)

- A. Enables you to view your workflows
- B. Enables you to modify a workflow definition file
- C. Enables you to download a workflow definition file
- D. Displays status information for the process instance
- E. Enables administrators to perform control operations
- F. Enables you to search for a workflow process instance
- G. Provides only summary-level information about individual activities of a workflow process

Answer: A, D, E, F

Question: 139

A global company has Oracle E-Business Suite Release 12 operations in the U.S., United Kingdom, and Sweden. The company now wants to add Denmark to Oracle E-Business Suite Release 12. Identify two components that are required to create a new Denmark responsibility. (Choose two.)

- A. Menu
- B. Exclusions
- C. Data Group
- D. Request Set
- E. Stage Function
- F. Individual concurrent requests

Answer: A, C

Question: 140

Employee information in Oracle E-Business Suite Release 12 is partitioned by _____.

- A. Legal Entity
- B. Operating Unit
- C. Business Group
- D. HR Organization
- E. Inventory Organization

Answer: C

Exam Name:	Oracle EBS R12: E-Business Essentials		
Exam Type:	Oracle		
Exam Code:	1Z0-204	Total Questions:	199

Question: 141

Identify the Flexfield that can be used as an individual parameter and as a parameter range in the Oracle Web Applications Desktop Integrator.

- A. Key Flexfield
- B. Range Flexfield
- C. GL Ledger Flexfield
- D. Descriptive Flexfield
- E. Account Aliases Flexfield

Answer: A

Question: 142

ABC Corp. has set up the Asset Category Key Flexfield. It has also set up a Descriptive Flexfield to store vehicle information associated with the asset category "Vehicle." Identify two correct statements. (Choose two.)

- A. The setting up of the Descriptive Flexfield is mandatory.
- B. The Asset Category Flexfield is owned by the Oracle Assets module.
- C. The Descriptive Flexfield attributes are associated with tables in the Oracle Assets module.
- D. Only the Asset Category Key Flexfield is associated with tables in the Oracle Assets module.

Answer: B, C

Question: 143

A user has been assigned with five Operating Units in his or her security profile. The user transacts in three of those Operating Units, the remaining two are used occasionally. The user can limit the list of values available to the three Operating Units by _____.

- A. Setting the preferred Operating Units in user preferences
- B. Setting the values for the MO: Operating Unit at the user level profile option
- C. Setting the values for the MO: Default Operating Units at the user level profile option
- D. Requesting the system administrator, to update the Operating Units in the security profile
- E. Requesting the system administrator to set up MO: Default Operating Unit for the responsibility

Answer: A

Question: 144

While defining customers and suppliers, what is the level of information that is stored for global registries?

- A. Header-level information in partitioned tables
- B. Header-level information in an unpartitioned table for all entities within an instance
- C. Header-level information in partitioned tables with Taxpayer ID, Federal reportable, and State reportable options
- D. Header-level information in an unpartitioned table with Taxpayer ID, Federal reportable, and State reportable options

Answer: B

Question: 145

Identify two features of Flexfields in Oracle E-Business Suite Release 12. (Choose two.)

- A. Flexfields consist of segments.
- B. Flexfields are configurable fields.

Exam Name:	Oracle EBS R12: E-Business Essentials		
Exam Type:	Oracle		
Exam Code:	1Z0-204	Total Questions:	199

- C. Flexfields are used only in Oracle Financials suite of products.
- D. Flexfields are available for all forms in Oracle E-Business Suite Release 12.

Answer: A, B

Question: 146

Oracle Workflow Architecture includes Workflow Engine, Workflow Builder, and Directory Service. Identify three true statements. (Choose three.)

- A. Directory Service contains users and roles.
- B. Workflow Engine resides in Oracle database.
- C. Directory service contains agents and services.
- D. Workflow Builder resides in development client.
- E. Workflow Engine resides in Oracle Application Server.
- F. Workflow Builder saves workflow process definitions in a graphical format.

Answer: A, B, D

Question: 147

Which tier is responsible for holding logic that supports and manages the Oracle E-Business Suite Release 12 Application components?

- A. Database Tier
- B. Application Tier
- C. Technology Layer
- D. Desktop/Client Tier
- E. Application Tier and Database Tier

Answer: B

Question: 148

The technical architecture in Oracle E-Business Suite Release 12 supports the business needs of the application. Select three technical features included in the technical architecture in Oracle E-Business Suite Release 12. (Choose three.)

- A. Global
- B. Mobile interface
- C. Rapid implementation
- D. Business Intelligence
- E. End-to-end integration
- F. Self-service (HTML/JSPs)

Answer: B, D, F

Question: 149

The technical architecture in Oracle E-Business Suite Release 12 supports the business needs of the application. Select three business principles that drive the business architecture in Oracle E-Business Suite Release 12. (Choose three.)

- A. Global
- B. Mobile interface
- C. Business Intelligence
- D. Rapid implementation
- E. End-to-end integration
- F. Self-service (HTML/JSPs)

Exam Name:	Oracle EBS R12: E-Business Essentials		
Exam Type:	Oracle		
Exam Code:	1Z0-204	Total Questions:	199

Answer: A, D, E

Question: 150

Identify three features of Oracle Workflow. (Choose three)

- A. Enhances data security
- B. Helps you in maintaining business processes
- C. Helps you in keeping track of individual business transactions
- D. Starts workflow processes as a result of an inbound message
- E. Captures exceptions during workflow execution and takes relevant actions
- F. Integrates business functions only between business processes within a single Oracle E-Business Suite instance

Answer: B, D, E

Question: 151

Company ABC wants to distribute the system administration tasks to local administrators. Select the two access control layers needed to accomplish this requirement. (Choose two.)

- A. Data Security
- B. Functional Security
- C. Registration Processes
- D. Delegated Administration
- E. Self Service and Approvals
- F. Role-Based Access Control

Answer: D, F

Question: 152

Identify four related sets of business needs that Standard Request Submission allows you to satisfy. (Choose four.)

- A. View report output online.
- B. Compile forms and reports.
- C. Remove programs from request sets.
- D. Use a standard interface to run your programs and reports.
- E. Automatically run programs, reports, or request sets at specific time intervals.
- F. View a log file that summarizes the completion information about all the reports and programs in a request set.

Answer: A, D, E, F

Question: 153

You have been asked by the HR Manager to define Oracle Alert to show all employees terminated in the past six months. Identify three pieces of information that is required to define this Alert. (Choose three.)

- A. Actions that you want Alert to perform
- B. Frequency with which you want to run this Alert
- C. A SQL statement that retrieves terminated employees
- D. Name of the concurrent program to be run after Alert runs
- E. Database table name, which stores employee information to specify in the Event Details section

Exam Name:	Oracle EBS R12: E-Business Essentials		
Exam Type:	Oracle		
Exam Code:	1Z0-204	Total Questions:	199

Answer: A, B, C

Question: 154

Event Types in Subledger Accounting is a grouping of _____.

- A. Events
- B. Accounts
- C. Event Models
- D. Event Entities
- E. Event Classes

Answer: E

Question: 155

Identify four tasks that you can perform using Oracle Workflow in Oracle E-Business Suite Release 12. (Choose four.)

- A. Automate business processes.
- B. Generate account code combinations.
- C. Approve standard business documents.
- D. Send notifications using Advanced Queuing.
- E. Generate inventory item numbers using item generator workflow.
- F. Integrate with third party business systems that are not on a company network.

Answer: A, B, C, F

Question: 156

The SLA: SRS Trace Mode profile option indicates where the debug information provided by the concurrent programs is printed. The values for this profile option are _____ and _____. (Choose two.)

- A. AF File
- B. LogFile
- C. OutFile
- D. User Defined file name

Answer: A, B

Question: 157

Select four advantages that Oracle Daily Business Intelligence provides. (Choose four.)

- A. Updates only changed data
- B. Drills to a report from any linked value
- C. Uses materialized views and incremental refreshes
- D. Enables design of dashboards for a particular responsibility
- E. Replicates data from a transaction instance to a reporting instance

Answer: A, B, C, D

Question: 158

Select the four access control layers associated with Oracle User Management (OUM). (Choose four.)

- A. Data Security
- B. Functional Security

Exam Name:	Oracle EBS R12: E-Business Essentials		
Exam Type:	Oracle		
Exam Code:	1Z0-204	Total Questions:	199

- C. Registration Processes
- D. Delegated Administration
- E. Self Service and Approvals
- F. Role-Based Access Control

Answer: C, D, E, F

Question: 159

Which two options would you use to restrict the functionality provided by a responsibility? (Choose two.)

- A. Creating an appropriate role
- B. Creating an appropriate group
- C. Constructing a new menu hierarchy
- D. Defining rules to exclude specific functions

Answer: C, D

Question: 160

What are the three object components of Data Security? (Choose three.)

- A. Object
- B. Object Groups
- C. Object Instance
- D. Object Group Set
- E. Object Instance Set

Answer: A, C, E

Question: 161

Identify three components in a Daily Business Intelligence report. (Choose three.)

- A. Menu
- B. Folder
- C. Region
- D. Parameter
- E. Key Performance Indicator

Answer: C, D, E

Question: 162

In the Multi-Org model, which organization type is the highest level that impacts accounting?

- A. Ledger
- B. Operating Unit
- C. Business Group
- D. GRE/Legal Entity
- E. Inventory Organization

Answer: A

Question: 163

You are defining the Invoice Descriptive Flexfield (DFF) in Oracle Payables, and a warning message appears during DFF compilation. What is this warning message?

Exam Name:	Oracle EBS R12: E-Business Essentials		
Exam Type:	Oracle		
Exam Code:	1Z0-204	Total Questions:	199

- A. There is no context defined in the DFF.
- B. The DFF does not contain a Reference field.
- C. There is no segment defined in the DFF structure.
- D. The DFF uses features that are supported only in Oracle Forms.
- E. The "Synchronize with Reference Field" check box is not enabled.

Answer: D

Question: 164

Select three features of Oracle E-Business Suite Release 12 that leverage investment in technology. (Choose three.)

- A. Oracle E-Business Suite Release 12 is engineered to work as an integrated system on a common IT infrastructure.
- B. Oracle E-Business Suite Release 12 open standards-based architecture supports integration with non-Oracle applications.
- C. Technology support to use SQL*Plus, Oracle Data Browser, database triggers, and other tools to modify Oracle Applications data is recommended.
- D. Oracle E-Business Suite Release 12 has the functionality to track who has made changes to your information when the changes are made using database tools.
- E. Support for internal Oracle E-Business Suite Release 12 processes extends beyond enterprise boundaries to include customers, suppliers, and other trading partners.

Answer: A, B, E

Question: 165

Select three statements that are applicable for Subledger Accounting. (Choose three.)

- A. Subledger Accounting posts journals from Subledgers.
- B. Subledger Accounting enables the client to make online inquiries.
- C. Subledger Accounting enables the client to keep detailed accounting entries.
- D. Subledger Accounting maintains accounting information for Payables and Receivables.
- E. Subledger Accounting enables the client to set up rules for deriving chart of accounts code combination.

Answer: B, C, E

Question: 166

Oracle Daily Business Intelligence (DBI) Release 12 functions are secured using the Oracle Application function security. DBI is also secured using a combination of user-based and responsibility-based data and function security. Identify five parameters used to secure dashboards. (Choose five.)

- A. District
- B. Commodity
- C. Sales Group
- D. Operating Unit
- E. Request Type
- F. Inventory Organization

Answer: A, B, C, E, F

Question: 167

Exam Name:	Oracle EBS R12: E-Business Essentials		
Exam Type:	Oracle		
Exam Code:	1Z0-204	Total Questions:	199

Select three benefits of centralizing Oracle E-Business Suite Release 12 Application software using the shared application tier file system model (originally shared APPL_TOP). (Choose three.)

- A. Eliminates files for unlicensed products
- B. Contains subdirectory for each product under APPL_TOP
- C. Increases performance by adding multiple APPL_TOP directories
- D. Enables Oracle Applications to scale well with an increasing load
- E. Eliminates the need to install and maintain application software on each desktop client PC

Answer: B, D, E

Question: 168

Data Security is a layer of Access Control and builds on _____.

- A. Functional Security
- B. Registration Processes
- C. Delegated Administration
- D. Self Service and Approvals
- E. Role-Based Access Control

Answer: A

Question: 169

Identify the correct sequence of Oracle E-Business Suite Release 12 Security Layers from bottom to top.

- A. Function Security, Data Security, and Role-Based Access Control
- B. Role-Based Access Control, Data Security, and Function Security
- C. Data Security, Function Security, and Role-Based Access Control
- D. Function Security, Role-Based Access Control, and Data Security

Answer: A

Question: 170

Access Control is implemented in layers. Each layer builds upon the one that precedes it. Identify three correct statements about precedence of access control layers. (Choose three.)

- A. Data Security precedes Functional Security.
- B. Data Security precedes Role-Based Access Control.
- C. Delegated Administration precedes Registration Processes.
- D. Registration Processes precedes Self Service and Approvals.
- E. Self Service and Approvals precedes Role-Based Access Control.

Answer: B, C, D

Question: 171

Which three major application product families are included in the Oracle E-Business Suite Release 12 footprint? (Choose three.)

- A. Oracle Workflow
- B. Oracle Financials
- C. Oracle Applications Framework
- D. Oracle Applications Object Library
- E. Oracle Project Management Product Suite

Exam Name:	Oracle EBS R12: E-Business Essentials		
Exam Type:	Oracle		
Exam Code:	1Z0-204	Total Questions:	199

F. Oracle Human Resources Management System Suite

Answer: B, E, F

Question: 172

Identify three features of the Fusion Business Intelligence Embedded Dashboard page. (Choose three.)

- A. Widgets
- B. Separate sign-on to access
- C. Display of transactional data
- D. Time summarization options
- E. Delegation of roles for a limited time

Answer: A, D, E

Question: 173

Identify four components that are part of the Oracle Application Technology Layer. (Choose four.)

- A. OA Framework
- B. Common Modules
- C. Application Utilities
- D. Application Object Library
- E. Application Responsibilities
- F. Application System Administration

Answer: A, B, C, D

Question: 174

Identify four tasks that you can perform from the Administrator home page of Oracle Workflow embedded in Oracle E-Business Suite Release 12. (Choose four.)

- A. Access Developer Studio.
- B. View signature evidence for notifications with Signature Policy.
- C. View Event Subscriptions that are significant to a particular System.
- D. View signature evidence for notifications with or without Signature Policy.
- E. Create Vacation Rules for other users only if you are the Workflow Administrator.
- F. Create Vacation Rules for other users even if you are not the Workflow Administrator.

Answer: A, B, C, E

Question: 175

Identify three ways in which the code combinations of a Key Flexfield are stored in Oracle E-Business Suite Release 12. (Choose three.)

- A. There is one column for every Key Flexfield Segment.
- B. One column can store more than one Key Flexfield Segment.
- C. The unique ID column functions as the nonprimary key for the GL Code Combinations table.
- D. The code combinations are stored in a database table called the GL Code Combinations table.
- E. Each unique combination of Segment values is identified by a unique ID value stored in a unique ID column.

Answer: A, D, E

Question: 176

Exam Name:	Oracle EBS R12: E-Business Essentials		
Exam Type:	Oracle		
Exam Code:	1Z0-204	Total Questions:	199

Identify three statements that are true regarding functions and menus. (Choose three.)

- A. Functions can be excluded at any level.
- B. Excluding a menu excludes all its child functions.
- C. Excluding a menu does not exclude the functions nested in that menu.
- D. Excluding a menu excludes all the functions and menus nested in that menu.
- E. Excluding a function does not exclude all occurrences of that function from the responsibility's menu structure.

Answer: A, B, D

Question: 177

Identify three modules that can be secured using the Operating Unit in Oracle E-Business Suite Release 12. (Choose three.)

- A. Oracle Assets
- B. Oracle Payables
- C. Oracle Receivables
- D. Oracle General Ledger
- E. Oracle Cash Management

Answer: B, C, E

Question: 178

Identify three regions in Daily Business Intelligence. (Choose three.)

- A. Link
- B. Menu
- C. Folder
- D. Report
- E. Parameter
- F. Key Performance Indicator

Answer: A, E, F

Question: 179

Identify three actions that you can perform using Oracle Alerts. (Choose three.)

- A. Send an email message.
- B. Submit a concurrent request.
- C. Restart concurrent managers.
- D. Run an operating system script file of any size.
- E. Run an operating system script file of size less than 32 K.

Answer: A, B, E

Question: 180

ABC Corp. uses Oracle E-Business Suite Release 12 and wants to design an Order Status Web inquiry screen to make order statuses visible to its customers online. How can ABC Corp. ensure that customers view only their individual order statuses?

- A. By securing attributes for each customer
- B. By excluding attributes for individual customers
- C. By assigning a separate attribute value for INTERNAL_CONTACT_ID
- D. By assigning the same attribute value for CUSTOMER_CONTACT_ID

Exam Name:	Oracle EBS R12: E-Business Essentials		
Exam Type:	Oracle		
Exam Code:	1Z0-204	Total Questions:	199

Answer: A

Question: 181

In the Descriptive Flexfield (DFF) implementation, the purpose of the "Synchronize with Reference Field" check box is to synchronize _____.

- A. The DFF Values with the Reference field
- B. The DFF Contexts with the Reference field
- C. The DFF Attributes with the Reference field
- D. The DFF Segments with the Reference field
- E. The DFF Value Sets with the Reference field

Answer: B

Question: 182

You have Purchase Order approval authority in Oracle E-Business Suite Release 12. You are planning to go on vacation for three weeks without access to email. Select four ways in which you can manage Workflow notifications using Advanced Worklist options in your absence. (Choose four.)

- A. Grant your Worklist Access for all Workflow Item Types to your assistant.
- B. Grant your Worklist Access for selected Workflow Item Types to your assistant.
- C. Create a Vacation Rule to automatically close all notifications from a specific FYI notification.
- D. Create a Vacation Rule to automatically close all FYI notifications for all Workflow Item Types.
- E. Create a Vacation Rule to reassign all notifications for all Workflow Item Types to your assistant using the "Action my notifications" option.
- F. Create a Vacation rule to reassign all notifications for all Workflow Item Types to your assistant using the "Delegate your response" option.

Answer: A, B, C, F

Question: 183

Key Flexfields appear on three types of application forms in Oracle E-Business Suite Release 12. Identify the three types of forms. (Choose three.)

- A. Range form
- B. Custom form
- C. Self Service form
- D. Foreign Key form
- E. Combinations form
- F. Oracle Application Framework

Answer: A, D, E

Question: 184

Data Security Policies restrict the actions or operations that can be performed on a specific business object (for example, Inventory Items). Which three Data Security Policies can restrict access? (Choose three.)

- A. All Instances
- B. An instance Set
- C. A Data Group Set
- D. A specific Instance
- E. A specific Data Group

Exam Name:	Oracle EBS R12: E-Business Essentials		
Exam Type:	Oracle		
Exam Code:	1Z0-204	Total Questions:	199

Answer: A, B, D

Question: 185

Company ABC is implementing Oracle User Management (OUM). It has decided to implement the Self-Service and Approvals access control layer. What are the three self-service registration tasks an end user can perform? (Choose three.)

- A. Reset passwords.
- B. Obtain new user accounts.
- C. Request deactivation of responsibility.
- D. Request reports to be added to request set.
- E. Request additional access to the applications.

Answer: A, B, E

Question: 186

The Accounting Flexfield of ABC Corporation is: Company. Department. Account. Cost Center. Identify four correct statements. (Choose four.)

- A. Company is a segment in the combination.
- B. The account code combination is a Key Flexfield.
- C. The account code combination is identified by a structure.
- D. The account code combination is a Key Flexfield as well as a Descriptive Flexfield.
- E. The Flexfield appears on your form as a two-character-wide text field with brackets [] as its prompt.
- F. Existing values for the Accounting Flexfield appear as a concatenated value having segment separators.

Answer: A, B, C, F

Question: 187

Identify two correct statements regarding Function Security. (Choose two.)

- A. Defines access controls through roles
- B. Is built on the role-based access control layer
- C. Is the base layer of access control in Oracle Applications
- D. Restricts user access to individual menus and menu options
- E. Restricts user access to data within menus and menu options

Answer: C, D

Question: 188

You are the manufacturing lead for XYZ's implementation of Oracle E-Business Suite Release 12.

Your client has these requirements:

1. Create a production plan.
2. Analyze Sales Order information.
3. Calculate capacity load ratio by resource or production line.
4. Analyze resources, materials, costs, and job schedule progress.

Identify the two flows you would implement to accomplish these requirements. (Choose two.)

Exam Name:	Oracle EBS R12: E-Business Essentials		
Exam Type:	Oracle		
Exam Code:	1Z0-204	Total Questions:	199

- A. Click to Order
- B. Order to Cash
- C. Procure to Pay
- D. Forecast to Plan
- E. Demand to Build

Answer: D, E

Question: 189

Identify three correct statements regarding Oracle E-Business Suite Release 12. (Choose three.)

- A. Can run entirely on the Internet
- B. A minimum of two modules needs to be implemented for an organization
- C. Is engineered to work as an integrated system on a single IT infrastructure
- D. Supports multidirectional flows of business information within an organization

Answer: A, C, D

Question: 190

Identify three features of Daily Business Intelligence. (Choose three.)

- A. Provides a cross-enterprise reporting capability
- B. Requires a data warehouse setup for its implementation
- C. Creates a separate subset of transactions in a new database
- D. Is based on a single, transactional database for all products and customers
- E. Provides planning, execution, and reporting capabilities to optimize business performance

Answer: A, D, E

Question: 191

Shared entities are used throughout Oracle E-Business Suite Release 12. Identify the four entities that are shared. (Choose four.)

- A. Ledger
- B. Sales Force
- C. Unit of Measure
- D. Invoice Sources
- E. Oracle Application Object Library (AOL)

Answer: A, B, C, E

Question: 192

Identify three characteristics of Oracle HTML-based Applications (formerly known as Self-Service Applications). (Choose three.)

- A. Use Oracle Forms for interface
- B. Use metadata dictionary for flexible layout
- C. Operate by direct connection to Web server
- D. Ability to re-establish dropped network connections
- E. Dynamically generate HTML pages by executing Java code

Answer: B, C, E

Question: 193

Exam Name:	Oracle EBS R12: E-Business Essentials		
Exam Type:	Oracle		
Exam Code:	1Z0-204	Total Questions:	199

ABC Inc. added a new Operating Unit to its existing Multi-Org Access-enabled responsibility. When users logged in using their existing responsibility, they could not see the new Operating Unit in the list of values. What could be the cause?

- A. Security List Maintenance was not run.
- B. The Set MO: Operating Unit profile was not defined.
- C. The Set Multi-Org Preferences profile was not defined.
- D. The Set MO: Default Operating Unit profile was not defined.
- E. The Set MO: Security profile was not defined for the responsibility.

Answer: A

Question: 194

Identify two types of data that can be purged by running the "Purge Obsolete Workflow Runtime Data" concurrent program. (Choose two.)

- A. Errored work items
- B. Inactive work items
- C. Deferred work items
- D. Completed work items
- E. Expired users and roles

Answer: D, E

Question: 195

Identify two features of Oracle Workflow in Oracle E-Business Suite Release 12. (Choose two.)

- A. Enhances data security
- B. Helps you focus on managing individual business transactions
- C. Has each activity in a workflow as a PL/SQL function or a notification or a subprocess
- D. Can integrate business functions only between business processes within a single company
- E. Can integrate business processes within an enterprise, as well as between different organizations and different systems

Answer: C, E

Question: 196

You are on the road traveling to an OAUG conference. You have received a notification in plain text on your mobile device to approve PO requisition from the Oracle E-Business Suite Release 12 instance. Identify the key information in your reply email that is required to process your response.

- A. Your reply message must include approval comments.
- B. Your reply message must include electronic signature from your mobile device.
- C. Your reply message must include Notification ID and Access key from the original notification.
- D. Your reply message must include Notification ID and PO requisition number from the original notification.
- E. Your reply message must include your login password to the Oracle E-Business Suite Release 12 instance.

Answer: C

Question: 197

Select four areas found in the DATA_TOP directory in Oracle E-Business Suite Release 12. (Choose four.)

Exam Name:	Oracle EBS R12: E-Business Essentials		
Exam Type:	Oracle		
Exam Code:	1Z0-204	Total Questions:	199

- A. Redo log files
- B. Data tablespace
- C. Index tablespaces
- D. Product directories
- E. System tablespace

Answer: A, B, C, E

Question: 198

XYZ Corp. has operations in the U.S. and Canada. Within Canada, it has two separate Divisions due to Statutory requirements: one in Quebec and another in Ontario. How would you define the organization structure for XYZ Corp. from the information given above?

- A. Two Ledgers, two Legal Entities, and two Operating Units
- B. Two Ledgers, two Legal Entities, and three Operating Units
- C. Two Ledgers, three Legal Entities, and two Operating Units
- D. Two Ledgers, three Legal Entities, and three Operating Units
- E. Three Ledgers, three Legal Entities, and three Operating Units

Answer: D

Question: 199

ABC Inc. is in the process of consolidating the financial data entry functions. There are three divisions: A, B, and C. They are defined as three separate Operating Units that share a Legal Entity and a Business Group.

To meet your client's requirement, you perform these actions:

1. Create a standard security profile and assign it to the three Operating Units.
2. Consolidate responsibilities and assign the MO:Security Profile option with the security profile created.
3. Run the Security List Maintenance program.
4. Create a global security profile and assign it to the three Operating Units.

Select the sequence of steps to be performed.

- A. 1, 2, 4
- B. 4, 2, 3
- C. 4, 3, 2
- D. 1, 2, 3
- E. 1, 3, 2

Answer: E

End of Document