

Exam Name:	Oracle 11i E-Business Essentials.		
Exam Type:	Oracle		
Exam Code:	1Z0-200	Total Questions:	107

Question: 1

Identify three correct statements of a multi-org setup. (Choose three.)

- A. A Government Reporting Entity (GRE)/Legal Entity can point to one and only one Set of Books.
- B. Inventory Orgs can be associated directly with a GRE/Legal Entity.
- C. The creation of a Master Inventory organization is mandatory.
- D. One and only one Operating Unit can be associated with a GRE/Legal Entity.
- E. One Set of Books can have one or many GRE's/Legal Entities associated with it.

Answer: A, C, E

Question: 2

ABC Corp. has set up the Asset Category key flexfield. It has also set up a descriptive flexfield to store vehicle information associated with the asset category "Vehicle." Identify two correct statements. (Choose two.)

- A. The setting up of the descriptive flexfield is mandatory.
- B. The Asset Category flexfield is owned by the Oracle Assets module.
- C. The descriptive flexfield is associated with tables in the Oracle Assets module.
- D. Only the Asset Category flexfield is associated with tables in the Oracle Assets module.

Answer: B, C

Question: 3

ABC Corp. is implementing 11i Oracle Applications. The company has two local administrators in separate locations. They need to ensure that only a relevant set of users is visible to each of these local administrators. Which action will meet the requirement?

- A. Create a separate role for each local administrator
- B. Specify user administration privileges in Oracle User Management
- C. Use Data Security to provide relevant access to each local administrator
- D. Use Function Security to provide relevant access to each local administrator

Answer: B

Question: 4

Which are the two options to which a menu can be assigned? (Choose two.)

- A. Menu
- B. Functions
- C. Data group
- D. Responsibility
- E. Functional group

Answer: A, D

Question: 5

Identify two correct options regarding subscription processing. (Choose two.)

- A. Processes user response
- B. Processes function activities
- C. Passes information to Notification Mailer
- D. Sends event information to a workflow process
- E. Include the task of executing custom code on the event information

Exam Name:	Oracle 11i E-Business Essentials.		
Exam Type:	Oracle		
Exam Code:	1Z0-200	Total Questions:	107

Answer: D, E

Question: 6

Identify three correct statements regarding Oracle E-Business Suite. (Choose three.)

- A. It can run entirely on the Internet.
- B. A minimum of two modules needs to be implemented for an organization.
- C. It is engineered to work as an integrated system on a single IT infrastructure.
- D. It supports multi-directional flows of business information within an organization.

Answer: A, C, D

Question: 7

Which tier in Oracle E-Business Suite is responsible for storing application data?

- A. Database tier
- B. Application tier
- C. Client (desktop) tier
- D. Both database tier and application tier

Answer: A

Question: 8

Identify two tasks of the Application tier in 11i Oracle Applications architecture. (Choose two.)

- A. Process business logic
- B. Store business logic in the database
- C. Retrieve business logic from the database
- D. Manage communication between desktop/client tier and database tier

Answer: A, D

Question: 9

Paul wants to log in to 11i Oracle Applications. Identify the first server to which his request would go.

- A. Web server
- B. Reports server
- C. Administration server
- D. Concurrent Processing server

Answer: A

Question: 10

ABC Corp. is installing 11i Oracle Applications on two nodes A and B. On Node A, it has installed the Forms server, Web server, and Administration server.

On Node B, it has installed the Concurrent Processing server.

By default, on which node would the Reports server be installed?

- A. Node A
- B. Node B
- C. neither of the nodes
- D. both Node A and Node B

Exam Name:	Oracle 11i E-Business Essentials.		
Exam Type:	Oracle		
Exam Code:	1Z0-200	Total Questions:	107

Answer: B

Question: 11

Identify three features of shared entities. (Choose three.)

- A. Enable one-time definition of objects
- B. Are referenced by several Oracle Application modules
- C. Are defined in each Oracle Application module separately
- D. Are owned by a single Oracle Application module for table purposes only
- E. Are owned by a single Oracle Application module to designate the primary user or decision maker

Answer: A, B, D

Question: 12

ABC Corp. has configured 11i Oracle Applications for the English language. It is now planning to commence operations in France and so wants the same instance to be available in French as well. It can accomplish this task by using _____.

- A. Oracle Configurator
- B. Oracle General Ledger
- C. Application Object Library
- D. Oracle Human Resources

Answer: C

Question: 13

ABC Corp. has many service requests and tasks that have not met customer requirements. Using CRM Application Foundation module, identify the component that helps ABC Corp. designate resources who will own and work on the task.

- A. Task Manager
- B. Resource Manager
- C. Escalation Manager
- D. Assignment Manager

Answer: D

Question: 14

Which two statements are true regarding ownership of shared entities? (Choose two.)

- A. Customers is owned by Oracle Human Resources whereas Locations is owned by Oracle Receivables.
- B. Items is owned by Oracle Purchasing whereas Locations is owned by Oracle Receivables.
- C. Sales Force is owned by Oracle Order Management whereas Employees is owned by Oracle Human Resources.
- D. Set of books is owned by Oracle General Ledger whereas Locations is owned by Oracle Human Resources.
- E. Suppliers is owned by Oracle Purchasing whereas Units of Measure is owned by Oracle Inventory.

Answer: D, E

Question: 15

Exam Name:	Oracle 11i E-Business Essentials.		
Exam Type:	Oracle		
Exam Code:	1Z0-200	Total Questions:	107

XYZ Corp. is in the business of manufacturing cosmetics. It obtains and pays for raw materials. Which business flow in Oracle E-Business Suite would map to the above activities of obtaining and paying for raw materials?

- A. Order to Cash
- B. Procure to Pay
- C. Forecast to Plan
- D. Demand to Build
- E. Contract to Renewal

Answer: B

Question: 16

Which business flow is used for activities starting from customer registration, to setting up of product catalogs and targeted storefronts, and finally to capturing of the order?

- A. Click to Order
- B. Order to Cash
- C. Campaign to Order
- D. Contract to Renewal

Answer: A

Question: 17

XYZ Corp. has shipped goods against purchase orders to ABC Corp. ABC Corp. now has to pay for the goods received as also account and reconcile the transaction. Which are the 11i Oracle Application modules involved in these activities for ABC Corp.? (Choose all that apply.)

- A. Payables only
- B. Purchasing only
- C. Order Management, General Ledger, and Cash Management
- D. Purchasing, Payables, General Ledger, and Cash Management

Answer: A, D

Question: 18

Identify three features of Multi-Org. (Choose three.)

- A. The data can be logically partitioned.
- B. Users can be assigned to specific organizations.
- C. It defines organizations and the relationships between them.
- D. Multiple installations of Oracle Application products are needed.
- E. It enables at most two business units to use a single installation of Oracle Applications.

Answer: A, B, C

Question: 19

Which option provides a hierarchy of data security across lines of business?

- A. Alerts
- B. Multi-Org
- C. Flexfields
- D. Shared entities
- E. Business Intelligence

Exam Name:	Oracle 11i E-Business Essentials.		
Exam Type:	Oracle		
Exam Code:	1Z0-200	Total Questions:	107

Answer: B

Question: 20

Which organizations can post to the same set of books?

- A. Those organizations that share the same functional currency, calendar and accounting flexfield structure
- B. Those organizations that share the same currency but do not share the same calendar and accounting flexfield structure
- C. Those organizations that share the same accounting flexfield structure but do not share the same calendar and functional currency
- D. Those organizations that share the same calendar but do not share the same functional currency and accounting flexfield structure

Answer: A

Question: 21

ABC Corp. decides to implement Oracle Receivables, Oracle Payables, and Oracle Purchasing. To access any of these applications, a user must be given access to a responsibility associated with which of the following type of organization?

- A. A Legal Entity
- B. An Inventory Org
- C. An Operating Unit
- D. An Asset organization

Answer: C

Question: 22

Identify three features of a Balancing entity. (Choose three.)

- A. Balance sheets are prepared for a balancing entity
- B. A Legal Entity may comprise one or more than one balancing segments.
- C. Multiple balancing entities within the same Operating Unit structure is not supported.
- D. It is represented as a balancing segment value in the accounting flexfield structure.
- E. 11i Oracle Applications automatically secures balancing segment values within your chart of accounts with specific Legal Entities or Operating Units.

Answer: A, B, D

Question: 23

Identify the organization classification that is a segment value in the Accounting flexfield structure.

- A. Legal Entity
- B. Set of Books
- C. Operating Unit
- D. Balancing Entity

Answer: D

Question: 24

Examine the given scenario:

- 1) X is a legal entity defined in a multilevel company structure.

Exam Name:	Oracle 11i E-Business Essentials.		
Exam Type:	Oracle		
Exam Code:	1Z0-200	Total Questions:	107

2) There are three Operating Units A, B, and C rolled into it.
3) Paul, an assigned user of Oracle Payables, logs in from the Oracle Payables responsibility and is able to see information that is relevant to Operating unit

- A. 4) The MO:Operating Unit profile option has been set. Which three statements are true?
(Choose three.)
- A. All transactions created by Paul can be assigned to any of the Operating Units.
 - B. All transactions created by Paul are automatically assigned to Operating Unit A.
 - C. All transactions created by Paul are assigned to Operating Unit B and Operating Unit C.
 - D. The profile option did not include Operating Unit A and Operating Unit B due to an error by the system administrator.
 - E. The Oracle Payables responsibility is associated with an organization classified as an Operating Unit A.
 - F. The Oracle Payables responsibility is linked to the Operating Unit A by the MO: Operating Unit profile option.

Answer: B, E, F

Question: 25

While defining customers and suppliers, what is the level of information that is stored for global registries?

- A. Header-level information in partitioned tables
- B. Header-level information in an unpartitioned table for all entities within an instance
- C. Header-level information in an unpartitioned table with Taxpayer ID, Federal reportable and State reportable options
- D. Header-level information in partitioned tables with Taxpayer ID, Federal reportable and State reportable options

Answer: B

Question: 26

ABC Corp. has implemented Oracle Manufacturing applications. How is the data in these applications partitioned?

- A. By Application
- B. By Legal Entity
- C. By Operating Unit
- D. By Business Group
- E. By Inventory Organization

Answer: E

Question: 27

Which two statements are true regarding partitioning of data by an application? (Choose two.)

- A. General Ledger is partitioned by GL Set of Books.
- B. Accounts Payable is partitioned by GL Set of Books.
- C. Accounts Receivable is partitioned by Operating Unit.
- D. Order Management is partitioned by Inventory Organization.

Answer: B, D

Question: 28

To run reports across organizations in a multi-org environment, the MO:

Exam Name:	Oracle 11i E-Business Essentials.		
Exam Type:	Oracle		
Exam Code:	1Z0-200	Total Questions:	107

Top Reporting Level profile option should be set at which level?

- A. Set of Books level only
- B. Operating Unit level only
- C. Legal Entity level or Set of Books level
- D. Both Operating Unit and Legal Entity levels
- E. Both Legal Entity and Set of Books levels

Answer: C

Question: 29

In the Exhibit view the organization structure. The MO: Top Reporting Level is set to Set of Books. Paul is an Oracle Applications user.



He is connected to a responsibility that is linked to the Western Division operating unit. What are his reporting options?

- A. He cannot submit a report at the Operating Unit level.
- B. He can submit a report at the Set of Books level, Legal Entity level, and Operating Unit level.
- C. He can submit a report at the Legal Entity level only and can choose the U.S. Legal Entity or the Canada Legal Entity as the reporting context.
- D. He can submit a report at the Set of Books level only and the reporting context automatically defaults and is restricted to the U.S. Set of Books.

Answer: B

Question: 30

From the steps mentioned below, identify the correct sequence for enabling multi-org:

1. Perform setups unique to each operating unit.
2. Define organization structure.
3. Convert to multi-org.

Exam Name:	Oracle 11i E-Business Essentials.		
Exam Type:	Oracle		
Exam Code:	1Z0-200	Total Questions:	107

- A. 2,3,1
- B. 1,3,2
- C. 3,2,1
- D. 2,1,3

Answer: A

Question: 31

XYZ Corp has acquired ABC Corp. Consequently XYZ Corp needs to add additional Operating Units. Identify the sequence to add additional Operating Units.

- A. Adding additional Operating Units is not possible
- B. By creating the Operating Unit, running the Replicate Seed Data concurrent request, and creating new responsibilities as necessary; there is no need to set the MO: Operating profile option
- C. By creating the Operating Unit, running the Replicate Seed Data concurrent request, creating new responsibilities as necessary, and setting the MO: Operating profile option
- D. By setting the MO: Operating profile option, running the Replicate Seed Data concurrent request, creating the Operating Unit, and creating new responsibilities as necessary

Answer: C

Question: 32

Identify two features of flexfields in 11i Oracle Applications. (Choose two.)

- A. Flexfields are configurable fields.
- B. Flexfields consist of segments.
- C. Flexfields are available for all forms in 11i Oracle Applications.
- D. Flexfields are used only in Oracle Financials suite of products.

Answer: A, B

Question: 33

Identify two descriptive flexfield components whose values are used to determine contexts. (Choose two.)

- A. The Context field
- B. Global segments
- C. The Reference field
- D. Context-sensitive segments

Answer: A, C

Question: 34

Which three statements are true about modifying flexfield values? (Choose three.)

- A. They cannot be disabled.
- B. The value description can be changed.
- C. They can be deleted after they are defined.
- D. The effective dates for a value can be limited.
- E. They cannot be modified after they are defined.

Answer: B, D, E

Exam Name:	Oracle 11i E-Business Essentials.		
Exam Type:	Oracle		
Exam Code:	1Z0-200	Total Questions:	107

Question: 35

The accounting flexfield of ABC Corp is: Company.Department.Account.Cost Center. Identify four correct statements. (Choose four.)

- A. Company is a segment in the combination.
- B. The account code combination is a key flexfield.
- C. The account code combination is identified by a structure.
- D. The account code combination is a key flexfield as well as a descriptive flexfield.
- E. Existing values for the accounting flexfield appear as a concatenated value having segment separators.
- F. The flexfield appears on your form as a two-character wide text field with brackets [] as its prompt.

Answer: A, B, C, E

Question: 36

Identify three features of key flexfields. (Choose three.)

- A. They are used as identifiers for entities.
- B. The structure is comprised of segments.
- C. A key flexfield structure consists of multiple code combinations.
- D. Each segment of a key flexfield will usually contain meaningful information

Answer: A, B, D

Question: 37

Identify two features of descriptive flexfields. (Choose two.)

- A. It appears as a normal field on a form without any brackets.
- B. It enables you to build "intelligent keys."
- C. Descriptive flexfields do not have structures.
- D. It enables you to implement context-sensitive fields that appear only when needed.
- E. It enables you to customize 11i Oracle Applications features without programming.

Answer: D, E

Question: 38

ABC Corp. has set up the accounting key flexfield. It has also set up a descriptive flexfield to store vehicle information associated with the asset category "Vehicle". Identify three correct statements. (Choose three.)

- A. The descriptive flexfield is called an "intelligent key structure."
- B. The descriptive flexfield for the asset category "Vehicle" appears as a normal field on a form.
- C. The descriptive flexfield for the asset category "Vehicle" captures only additional information.
- D. You can define cross-validation rules to control the allowable combinations of segment values for the Accounting flexfield.
- E. The combination of values in the accounting flexfield identifies a particular business entity or class of entities.

Answer: C, D, E

Question: 39

Which option describes a group of segments?

- A. Values

Exam Name:	Oracle 11i E-Business Essentials.		
Exam Type:	Oracle		
Exam Code:	1Z0-200	Total Questions:	107

- B. Value set
- C. Flexfield structure
- D. Both structure and values

Answer: C

Question: 40

The accounting flexfield of ABC Corp. is set up as:

Company.Account.Department.

The account combination for the Revenue account is: 01.4120.110. What are 01, 4120, and 110?

- A. Values
- B. Value set
- C. Segments
- D. Structures

Answer: A

Question: 41

Identify three features of a Global segment. (Choose three.)

- A. It is implemented in key flexfields.
- B. It is implemented in descriptive flexfields.
- C. It uses the same column for all rows in the table.
- D. It uses different columns for each row in the table.
- E. It is a segment that always appears regardless of the context.

Answer: B, C, E

Question: 42

Identify three features of a value set. (Choose three.)

- A. Value sets are mandatory.
- B. Value sets must contain a list of values.
- C. The same value set can be shared between different flexfields.
- D. Value sets control the values for many of the report parameters.
- E. A value set is a definition of the values approved for entry by a particular flexfield segment.

Answer: C, D, E

Question: 43

A value set has the validation type set to "Independent." When a user enters a partial segment value, the list of values then retrieves all available values. Identify the List Type attribute.

- A. Poplist
- B. List of values
- C. Long list of values
- D. Poplist and list of values

Answer: C

Question: 44

Exam Name:	Oracle 11i E-Business Essentials.		
Exam Type:	Oracle		
Exam Code:	1Z0-200	Total Questions:	107

Identify two features of a value set that has a validation type of 'None'. (Choose two.)

- A. It has an approved list of values associated with it.
- B. The entered value must meet the formatting requirements.
- C. The flexfield value security rules cannot be used for a segment that uses this value set.
- D. Users can enter any value that they want even if it does not meet formatting requirements.

Answer: B, C

Question: 45

Identify two features of an "Independent" value set. (Choose two.)

- A. The values are stored in a product applications table.
- B. There is a predefined list of values for a segment.
- C. The values are stored in an Oracle Application Object Library table.
- D. You can enter a value other than those in the predefined list of values.

Answer: B, C

Question: 46

Which two statements are correct regarding a table-validated value set? (Choose two.)

- A. It does not provide a predefined list of values.
- B. You use a table-validated value set when you have a set of values that is already maintained in an application table.
- C. You cannot define a table that you want to use when defining the table-validated value set
- D. You can use a SQL query to retrieve all the approved values from the table when defining the table-validated value set.

Answer: B, D

Question: 47

Identify two features of a table-validated value set. (Choose two.)

- A. A table-validated value set has no list of approved values associated with it.
- B. The values in a table-validated value set are stored in Oracle Application Object Library's tables.
- C. Table-validated value sets obtain their lists of approved values from existing application tables.
- D. In a table-validated value set, you need to enter each value manually using the Segment Values window.
- E. A table-validated value set enables you to use your own application tables as value sets for flexfield segments.

Answer: C, E

Question: 48

Identify two considerations for determining the size of a value set. (Choose two.)

- A. Your value set size must be less than the size of the underlying segment column in the flexfield table.
- B. Your value set size must be less than or equal to the size of the underlying segment column in the flexfield table.
- C. Oracle Applications enables you to assign a value set whose values do not fit into the flexfield table.

Exam Name:	Oracle 11i E-Business Essentials.		
Exam Type:	Oracle		
Exam Code:	1Z0-200	Total Questions:	107

D. Choosing the maximum size for your value set depends on which flexfield you plan to use with your value set.

Answer: B, D

Question: 49

How are code combinations of a key flexfield stored? (Choose all that apply.)

- A. There is one column for every key flexfield segment.
- B. One column can store more than one key flexfield segment.
- C. They are stored in a database table called a code combinations table.
- D. The unique ID column functions as the nonprimary key for the code combinations table.
- E. Each unique combination of segment values is identified by a unique ID value stored in a unique ID column.

Answer: A, C, E

Question: 50

Identify three actions to be taken after defining a structure but before entering values. (Choose three.)

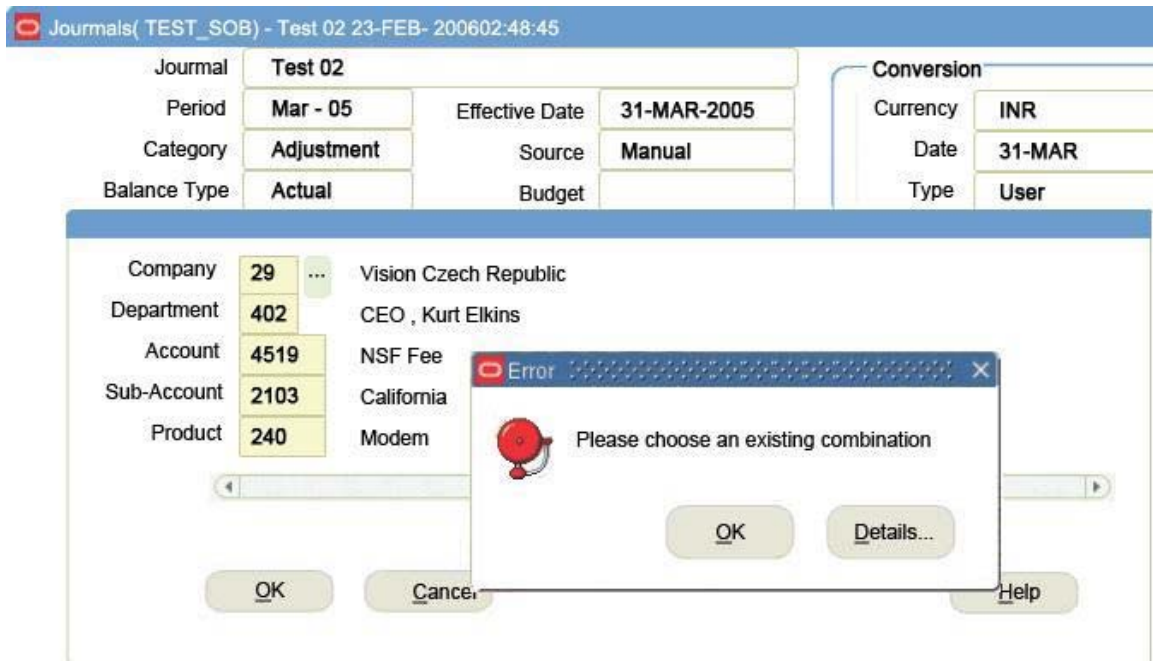
- A. Select the "Freeze Flexfield Definition" check box.
- B. Save your changes before freezing the flexfield definition.
- C. Do not save your changes before freezing the flexfield definition.
- D. Submit a request to build the structure view by selecting the "Compile" button.
- E. Submit a request to build the structure view before selecting the "Compile" button.

Answer: A, B, D

Question: 51

View the exhibit and examine the contents of the form. While entering a journal in the Journals form, you enter a code combination of 29.402.4519.2103.240 in the five segment accounting flexfield.

Exam Name:	Oracle 11i E-Business Essentials.		
Exam Type:	Oracle		
Exam Code:	1Z0-200	Total Questions:	107



However, you are unable to proceed after entering this account combination. What could be the problem in the structure definition of the accounting flexfield?

- A. The "Freeze Rollup Groups" checkbox is selected.
- B. The "Allow Dynamic Inserts" checkbox is deselected.
- C. The "Freeze Flexfield Definition" checkbox is selected.
- D. The "Cross-Validate Segments" checkbox is selected.

Answer: B

Question: 52

Identify three correct statements for defining a value set. (Choose three.)

- A. Specify format validations.
- B. Always specify a minimum value in format validation.
- C. Specify value set attributes for a new value set.
- D. Use predefined value sets if it serves your purpose.
- E. Always specify a validation type for value validation as "Dependent."

Answer: A, C, D

Question: 53

Identify two correct statements regarding Function Security. (Choose two.)

- A. Defines access controls through roles
- B. Is built on the Role Based Access Control layer
- C. Is the base layer of Access Control in Oracle Applications
- D. Restricts user access to individual menus and menu options
- E. Restricts user access to data within menus and menu options

Answer: C, D

Exam Name:	Oracle 11i E-Business Essentials.		
Exam Type:	Oracle		
Exam Code:	1Z0-200	Total Questions:	107

Question: 54

ABC Corp. wants to implement Oracle User Management. However, the organization has not implemented Oracle Human Resources management. So, can ABC Corp. implement Oracle User Management?

- A. No, Oracle User Management cannot be implemented.
- B. Yes, Oracle User Management can be implemented with limited functionality.
- C. Yes, Oracle User Management can be implemented without implementing Oracle Human Resources Management.
- D. Yes, Oracle User Management can be implemented, but only after implementing Oracle Human Resources Management.

Answer: C

Question: 55

Identify the correct sequence of Oracle Application Security layers from bottom to top.

- A. Function Security, Data Security, and Role Based Access Control
- B. Role Based Access Control, Data Security, and Function Security
- C. Data Security, Function Security, and Role Based Access Control
- D. Function Security, Role Based Access Control, and Data Security

Answer: A

Question: 56

Can you create an application user with start and end dates that are earlier than the current date?

- A. Yes, the login can be created, but it will not work.
- B. Yes, the login can be created, but it will work only once.
- C. No, the login cannot be created with start and end dates that are earlier than the current date.
- D. Yes, the login can be created, but only if the System Administrator responsibility is assigned to the user.

Answer: A

Question: 57

As a system administrator for 11i Oracle Applications, which two actions can you perform on user passwords? (Choose two.)

- A. Set the initial password
- B. Change an existing password
- C. See the password that was chosen by the user
- D. Set varying minimum lengths of passwords for different users

Answer: A, B

Question: 58

As a system administrator, you need to provide additional reporting and summarized information to some of your application users. How would you do this? (Choose all that apply.)

- A. By using Menus
- B. By using Exclusions
- C. By using Data Groups
- D. By using Request Groups

Exam Name:	Oracle 11i E-Business Essentials.		
Exam Type:	Oracle		
Exam Code:	1Z0-200	Total Questions:	107

Answer: A, D

Question: 59

Which three options are determined by a responsibility in Oracle Applications? (Choose three.)

- A. Inherited Roles
- B. Accessible Reports
- C. Accessible Applications
- D. Associated Set of Books
- E. Accessible Menus and Forms

Answer: B, D, E

Question: 60

Identify two required components of a responsibility. (Choose two.)

- A. Menu
- B. Function
- C. Exclusions
- D. Data group
- E. Request group

Answer: A, D

Question: 61

Identify three features of Data Groups. (Choose three.)

- A. Multiple data groups can be assigned to a Menu.
- B. Multiple data groups can be assigned to a Responsibility.
- C. A data group identifies the Oracle username that a form connects to when a Responsibility is selected.
- D. Data groups can be used to support multiple installations of an Oracle Applications product that supports multiple sets of books.
- E. Concurrent managers use a data group to identify the application that owns a report or concurrent program.

Answer: C, D, E

Question: 62

Identify three statements that are true regarding functions and menus. (Choose three.)

- A. Functions can be excluded at any level.
- B. Excluding a menu excludes all its child functions.
- C. Excluding a menu does not exclude the functions nested in that menu.
- D. Excluding a menu excludes all the functions and menus nested in that menu.
- E. Excluding a function does not exclude all occurrences of that function from the responsibility's menu structure.

Answer: A, B, D

Question: 63

Which two options would you use to restrict the functionality provided by a responsibility? (Choose two.)

Exam Name:	Oracle 11i E-Business Essentials.		
Exam Type:	Oracle		
Exam Code:	1Z0-200	Total Questions:	107

- A. Creating an appropriate role
- B. Creating an appropriate group
- C. Constructing a new menu hierarchy
- D. Defining rules to exclude specific functions

Answer: C, D

Question: 64

At which level can you exclude a function from a responsibility?

- A. Menu level, submenu level or function level
- B. Menu level and submenu level but not function level
- C. Menu level and function level but not submenu level
- D. Function level and submenu level but not menu level

Answer: A

Question: 65

ABC Corp. is running on 11i Oracle Applications and wants to ensure that supply records of one supplier are not visible to another supplier. Which action will meet the requirement?

- A. By securing attributes for each supplier
- B. By excluding attributes for individual suppliers
- C. By assigning the same attribute value for `VENDOR_CONTACT_ID`
- D. By assigning a separate attribute value for `INTERNAL_CONTACT_ID`

Answer: A

Question: 66

ABC Corp. is running on 11i Oracle Applications and wants to design web inquiry to make order statuses visible to its customers online. How can ABC Corp. ensure that customers view only their individual order status?

- A. By securing attributes for each customer
- B. By excluding attributes for individual customers
- C. By assigning the same attribute value for `CUSTOMER_CONTACT_ID`
- D. By assigning a separate attribute value for `INTERNAL_CONTACT_ID`

Answer: A

Question: 67

Identify three correct statements regarding Securing Attributes. (Choose three.)

- A. Is defined at the responsibility level
- B. Specifies access to database rows
- C. Hides specific database column from users
- D. A responsibility can be assigned to only one securing attribute
- E. Specifies the database column which the security would be based on in a Web inquiry

Answer: A, B, E

Question: 68

Can a menu be copied?

- A. No

Exam Name:	Oracle 11i E-Business Essentials.		
Exam Type:	Oracle		
Exam Code:	1Z0-200	Total Questions:	107

- B. Yes
- C. Yes, by using System Administrator Responsibility
- D. Yes, by using System Administration Responsibility

Answer: A

Question: 69

What would happen if you try saving an existing menu under a different name?

- A. There will be two menus.
- B. The original menu is disabled.
- C. The new menu will not contain any functions.
- D. The new menu will overwrite the original menu.

Answer: D

Question: 70

As a system administrator, you have to set a profile option specific to an operating unit. Which Profile Hierarchy Level would you choose?

- A. Site Level
- B. User Level
- C. Application Level
- D. Organization Level

Answer: D

Question: 71

A profile option set at the application level would override which of these profile levels?

- 1) User Level
- 2) Responsibility Level
- 3) Site Level

- A. 2
- B. 3
- C. 1 and 2
- D. 1, 2, and 3

Answer: B

Question: 72

If a user profile option value were to be changed, when would the change take effect? (Choose all that apply.)

- A. As soon as the user logs in
- B. As soon as the user changes responsibility
- C. When the Administration server is restarted
- D. After restarting the Conflict Resolution Manager
- E. As soon as the system administrator exits the instance

Answer: A, B

Question: 73

Can a defined profile value be referenced anywhere in Oracle Applications?

Exam Name:	Oracle 11i E-Business Essentials.		
Exam Type:	Oracle		
Exam Code:	1Z0-200	Total Questions:	107

- A. No
- B. Yes
- C. Yes, but only those profile values that are related to Application Object Library
- D. Yes, but only those profile values that are related to Oracle Human Resources

Answer: B

Question: 74

Identify two features of Oracle Workflow. (Choose two.)

- A. Enhances data security
- B. Focuses on individual business transactions
- C. Captures exceptions and takes relevant actions
- D. Starts processes as a result of an inbound message
- E. Can integrate business functions only between business processes within a single company

Answer: C, D

Question: 75

Identify two features of Oracle Workflow. (Choose two.)

- A. Enhances data security
- B. Makes you focus on managing individual business transactions
- C. Each activity can be a PL/SQL function or a notification or a subprocess
- D. Can integrate business processes within an enterprise as well as between different organizations and different systems

Answer: C, D

Question: 76

Which three statements are correct regarding the Oracle Workflow engine? (Choose three.)

- A. Generates a history of the items
- B. Is embedded in the Oracle database
- C. Is embedded in Oracle Application Server
- D. Maintains the state information for a workflow item
- E. Is dependent on the Business Event System for its functioning
- F. Interacts with the Notification System through the Workflow Definitions Loader

Answer: A, B, D

Question: 77

Identify the platform that hosts the workflow engine, and the Business Event System.

- A. Oracle Database
- B. Workflow Manager
- C. Oracle HTTP Server
- D. Oracle Application Server

Answer: A

Question: 78

An activity in a workflow process can be a _____.

Exam Name:	Oracle 11i E-Business Essentials.		
Exam Type:	Oracle		
Exam Code:	1Z0-200	Total Questions:	107

- A. Notification and a subprocess but not a PL/SQL function
- B. Subprocess and a PL/SQL function but not a notification
- C. PL/SQL function and a notification but not a subprocess
- D. PL/SQL function, a notification, a subprocess, or a business event

Answer: D

Question: 79

Identify three features of Oracle Workflow builder. (Choose three.)

- A. Monitors workflows
- B. Runs on Linux platform
- C. Saves workflow definition as a flat file
- D. Defines and customizes workflow definitions
- E. Has Navigator tree and Process diagram as its components

Answer: C, D, E

Question: 80

The _____ indicates any changes in the workflow state by using calls to PL/SQL or Java APIs.

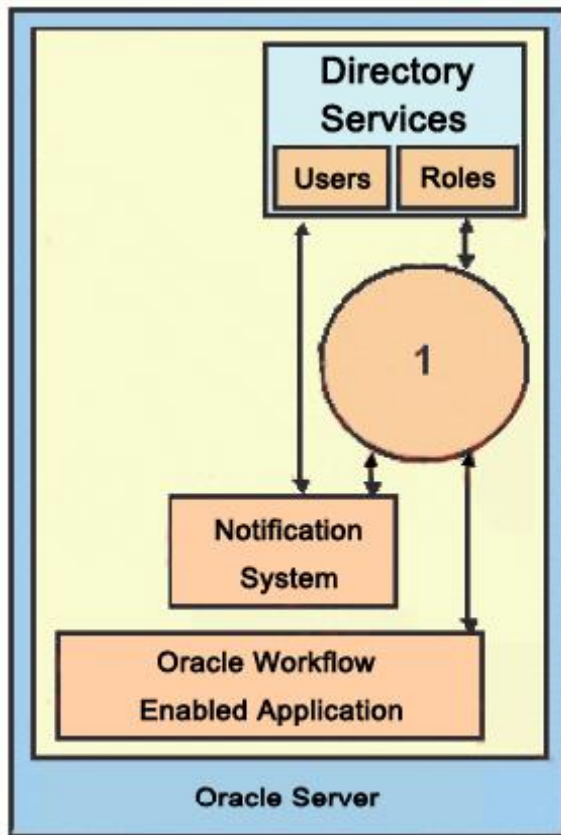
- A. Notification Mailer
- B. Workflow Engine
- C. Workflow Manager
- D. Notification System

Answer: B

Question: 81

View the Exhibit and identify the missing component marked as "1".

Exam Name:	Oracle 11i E-Business Essentials.		
Exam Type:	Oracle		
Exam Code:	1Z0-200	Total Questions:	107



- A. Notification Mailer
- B. Workflow Engine
- C. Advanced Queues
- D. Business Event System

Answer: B

Question: 82

Identify two features of the Notification System. (Choose two.)

- A. Executes workflow rules and functions
- B. Enables any user with access to the Internet to be included in a workflow process
- C. Notifies the loading of a workflow process definition file from a flat file to a database
- D. Provides access to the Worklist from Oracle E-Business Suite through the Worklist Web pages
- E. Leverages Oracle Advanced Queuing to enable business events to communicate across systems

Answer: B, D

Question: 83

Which two statements are true about the interaction between the Notification System and the Workflow Engine? (Choose two.)

- A. The Notification System relays user responses back to the Workflow Engine.

Exam Name:	Oracle 11i E-Business Essentials.		
Exam Type:	Oracle		
Exam Code:	1Z0-200	Total Questions:	107

- B. The Notification System communicates the event raised by the Business Event System to the Workflow Engine.
- C. The Workflow Engine sends information to the Notification Mailer program, and then informs the Notification System about this communication.
- D. The Workflow Engine informs the Notification System to deliver notifications to a user if an activity requires human intervention.
- E. The Notification System informs the Workflow Engine about the user to whom the notification needs to be sent.

Answer: A, D

Question: 84

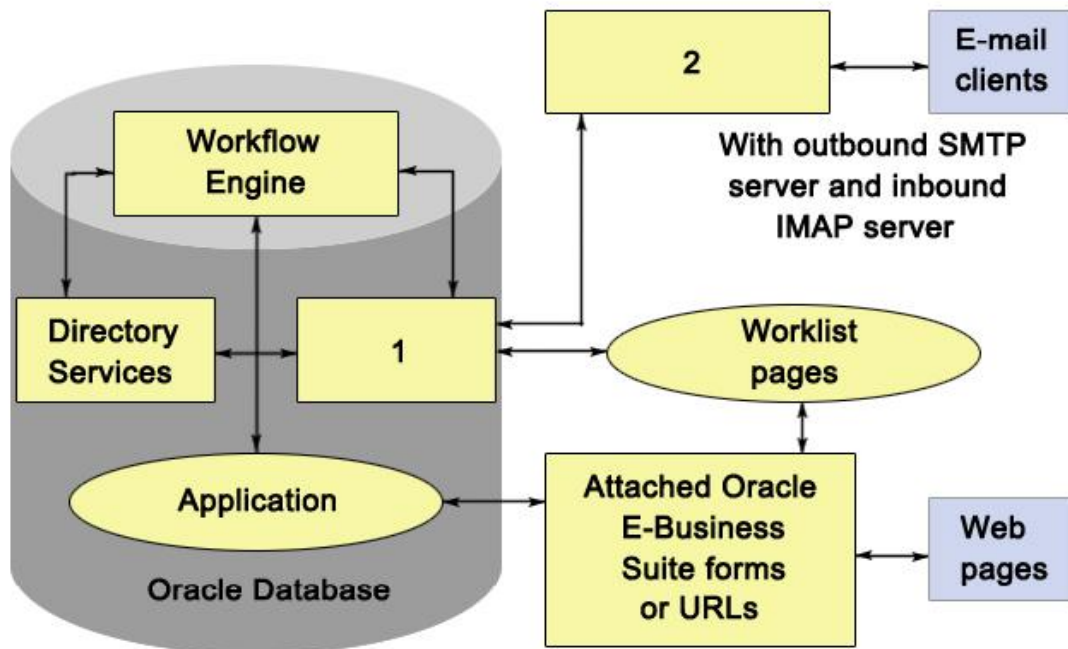
Identify two prerequisites for viewing notifications through Oracle Workflow Web pages. (Choose two.)

- A. The Business Event System should be configured.
- B. The Oracle Workflow Manager should be configured.
- C. Your Notification Mailer must be configured for UNIX sendmail.
- D. You must have a Web browser that supports frames and JavaScript.
- E. Oracle HTTP Server should be installed as the Web server for workflow.

Answer: D, E

Question: 85

View the Exhibit and identify the components marked as "1" and "2".



- A. 1 is the Notification System and 2 is the Notification Mailer.
- B. 1 is the Notification Mailer and 2 is the Notification System.
- C. 1 is the Workflow Manager and 2 is the Notification System.
- D. 1 is the Business Event System and 2 is the Notification System.

Answer: A

Exam Name:	Oracle 11i E-Business Essentials.		
Exam Type:	Oracle		
Exam Code:	1Z0-200	Total Questions:	107

Question: 86

_____ enables you to register subscriptions for events that are significant to an 11i Oracle Application instance.

- A. Event Activity
- B. Event Manager
- C. Workflow Manager
- D. Advanced Queues

Answer: B

Question: 87

Identify two correct options regarding event subscriptions. (Choose two.)

- A. They are defined in the Workflow Manager.
- B. They are triggered by the Workflow Engine.
- C. They can be enabled, disabled, or modified.
- D. They can define multiple subscriptions to an event.
- E. All subscriptions can be either enabled or disabled but never modified.

Answer: C, D

Question: 88

Which two statements are true regarding error handling in Oracle Workflow? (Choose two.)

- A. Workflow Engine captures errors.
- B. Workflow Manager captures errors.
- C. Default error handling is provided for subscriptions processing.
- D. Workflow Manager places errored events on the WF_ERROR queue.
- E. Notification System initiates the default error process after an error is reported.

Answer: A, C

Question: 89

Identify four business process integration requirements that can be addressed by Oracle Workflow. (Choose four.)

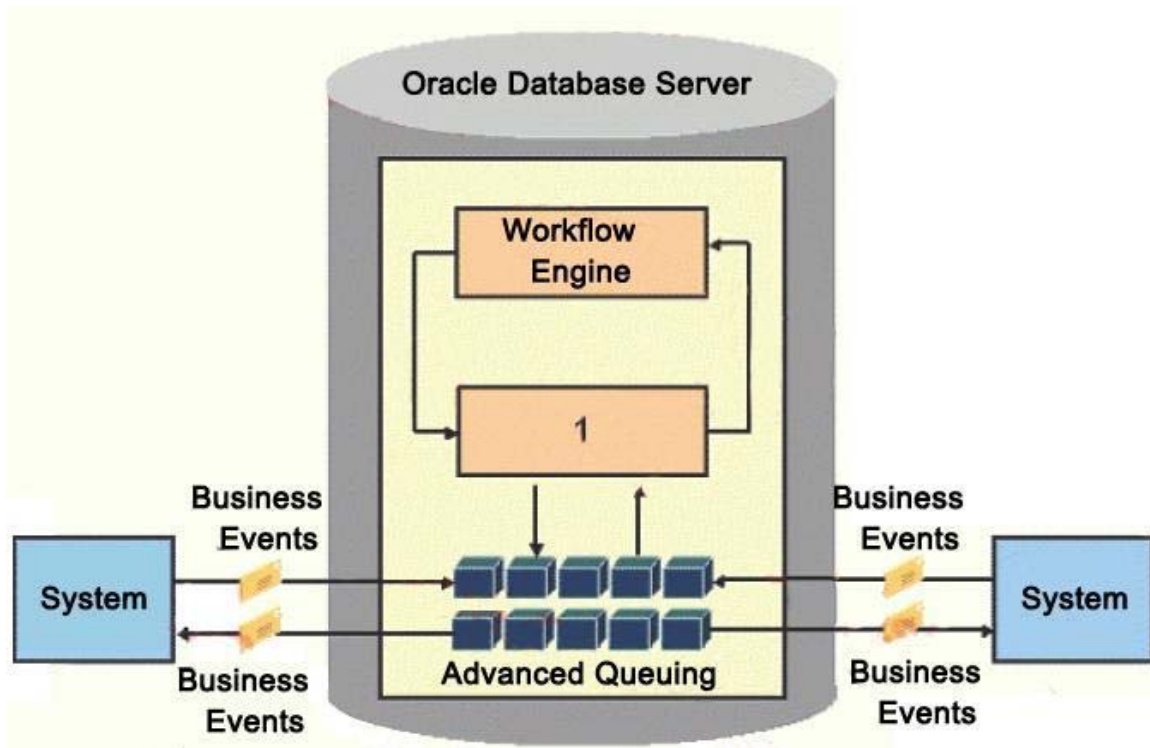
- A. Synchronous messaging
- B. Point-to-point system integration
- C. System integration messaging hub
- D. Distributed applications messaging
- E. Business event-based workflow processes

Answer: B, C, D, E

Question: 90

View the Exhibit and identify the component marked as "1".

Exam Name:	Oracle 11i E-Business Essentials.		
Exam Type:	Oracle		
Exam Code:	1Z0-200	Total Questions:	107



- A. Notification Mailer
- B. Workflow Manager
- C. Notification System
- D. Business Event System

Answer: D

Question: 91

Identify four features of Workflow Monitor. (Choose four.)

- A. Enables users to view their own workflows
- B. Enables you to modify a workflow definition file
- C. Enables you to download a workflow definition file
- D. Displays status information for the process instance
- E. Enables administrators to perform control operations
- F. Enables you to search for a workflow process instance
- G. Provides only summary-level information about individual activities of a workflow process

Answer: A, D, E, F

Question: 92

Which statement is true regarding Permanent Persistence values in Workflow purging?

- A. Items are deleted in n days.
- B. Incomplete activities are deleted.
- C. Items are deleted only when forced.
- D. Items with open notifications are deleted.

Answer: C

Exam Name:	Oracle 11i E-Business Essentials.		
Exam Type:	Oracle		
Exam Code:	1Z0-200	Total Questions:	107

Question: 93

Can a workflow item having incomplete Standard activities be eligible for purging?

- A. No
- B. Yes
- C. Yes, only if the incomplete activities in the workflow item are notifications
- D. Yes, only if the incomplete activities are deferred for more than 30 days

Answer: A

Question: 94

Identify three options that are true regarding alerts. (Choose three.)

- A. Send an e-mail message
- B. Submit a concurrent request
- C. Run an operating system script
- D. Monitor concurrent managers
- E. Run SQL scripts but not operating system scripts

Answer: A, B, C

Question: 95

As a system administrator for ABC Corp. you are required to notify the sales manager as soon as a customer's shipment gets processed. How might you do this?

- A. Through an Event Alert
- B. Through a Periodic Alert
- C. By configuring the Workflow Engine
- D. By configuring the Application server

Answer: A

Question: 96

_____ is a specified condition found during an alert check.

- A. Action
- B. Action Set
- C. Exception
- D. Response Set

Answer: C

Question: 97

Identify three correct statements regarding action-level settings in Oracle Alerts. (Choose three.)

- A. Can be set to perform an action when the database needs backing up.
- B. Can be set to perform an action when no rows are returned by a database query.
- C. Can be set to send a consolidated e-mail message for a group of occurrences pertaining to a condition.
- D. Can be set to send separate e-mail messages for each action that meets the occurrence criteria.

Answer: B, C, D

Question: 98

Exam Name:	Oracle 11i E-Business Essentials.		
Exam Type:	Oracle		
Exam Code:	1Z0-200	Total Questions:	107

Which two statements are true about Oracle Workflow and/or Oracle Alerts? (Choose two.)

- A. Workflow can support complex conditional logic.
- B. Alerts can be configured for any frequency of occurrence.
- C. Workflows can wait for a user response during an activity.
- D. Alerts run only when a database record is either updated or created.

Answer: A, C

Question: 99

Identify three features of Daily Business Intelligence. (Choose three.)

- A. Provides a cross-enterprise reporting capability
- B. Requires a data warehouse setup for its implementation
- C. Creates a separate subset of transactions in a new database
- D. Is based on a single, transactional database for all products and customers
- E. Provides planning, execution, and reporting capabilities to optimize business performance

Answer: A, D, E

Question: 100

Identify three components in a Daily Business Report. (Choose three.)

- A. Folder
- B. Menu
- C. Region
- D. Parameter
- E. Key performance indicator

Answer: C, D, E

Question: 101

ABC Corp. wants to track and analyze call volumes in its enterprise call centers. Which Daily Business Intelligence product can help achieve this objective?

- A. Sales Intelligence
- B. Quoting Intelligence
- C. Interaction Center Intelligence
- D. Service Contracts Intelligence

Answer: C

Question: 102

Which two statements are true about the features of Daily Business Intelligence? (Choose two.)

- A. KPIs cannot be disabled.
- B. The data that has changed since the last refresh is updated.
- C. Parameters regulate user access to content and functionality.
- D. Incremental refresh capabilities of Oracle Database are leveraged.

Answer: B, D

Question: 103

A _____ is a container for a unique set of information on a Daily Business Intelligence overview page.

Exam Name:	Oracle 11i E-Business Essentials.		
Exam Type:	Oracle		
Exam Code:	1Z0-200	Total Questions:	107

- A. Report
- B. Region
- C. Dashboard
- D. Key performance indicator

Answer: B

Question: 104

Identify two correct statements related to KPI and the KPI region in Daily Business Intelligence. (Choose two.)

- A. Can be of table format only
- B. Can be configured for each dashboard
- C. Organizes data into reporting hierarchies
- D. Is a strategic business factor that is used for reporting
- E. Contains a unique set of graphical information on a dashboard

Answer: B, D

Question: 105

Identify three types of regions in Daily Business Intelligence from the list below. (Choose three.)

- A. Link
- B. Folder
- C. Report
- D. Menu
- E. Parameter
- F. Key performance indicator

Answer: A, E, F

Question: 106

Identify two types of regions in Daily Business Intelligence from the list below. (Choose two.)

- A. Menu
- B. Table
- C. Folder
- D. Report
- E. Graph

Answer: B, E

Question: 107

Identify two features related to parameters in a Daily Business Intelligence Report. (Choose two.)

- A. They are based on responsibilities.
- B. Each page in a report contains common parameters.
- C. Parameters can be defined for individual regions of a report.
- D. Multiple primary dimension parameters can be associated with a page in a report.
- E. The Primary Dimension parameter is different for each page in a Daily Business Intelligence report.

Answer: B, E

End of Document